

Product datasheet for **TA320043**

NSRP1 Chicken Polyclonal Antibody

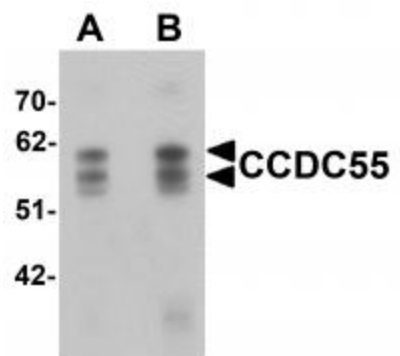
Product data:

Product Type:	Primary Antibodies
Applications:	IF, WB
Recommended Dilution:	WB: 0.5 - 1 ug/mL, IF: 20 ug/mL
Reactivity:	Human, Mouse, Rat
Host:	Chicken
Isotype:	IgY
Clonality:	Polyclonal
Immunogen:	CCDC55 antibody was raised against a 16 amino acid synthetic peptide near the carboxy terminus of human CCDC55.
Formulation:	CCDC55 Antibody is supplied in PBS containing 0.02% sodium azide.
Concentration:	1ug/ul
Purification:	CCDC55 Antibody is affinity chromatography purified via peptide column.
Conjugation:	Unconjugated
Storage:	Store at -20°C as received.
Stability:	Stable for 12 months from date of receipt.
Gene Name:	nuclear speckle splicing regulatory protein 1
Database Link:	NP_115517 Entrez Gene 237859 Mouse Entrez Gene 303346 Rat Entrez Gene 84081 Human Q9H0G5
Background:	CCDC55 Antibody: CCDC55, also known as Nuclear speckle-related protein 70 (NSrp70), was initially identified by the NIH Mammalian Gene Collection. Nuclear speckles are known to be the storage sites of mRNA splicing regulators. CCDC55 has been suggested to modulate alternative pre-mRNA splicing in vivo. It co-localizes and physically interacts with the SR proteins SC35 and ASF/SF2, essential splicing factors which are required for constitutive splicing and can regulate alternative mRNA splicing. Loss of CCDC55 in mice leads to early embryonic lethality highlights the importance of the functional role of CCDC55.
Synonyms:	CCDC55; HSPC095; NSrp70

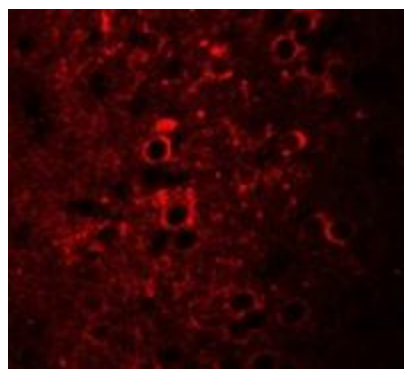


[View online »](#)

Product images:



Western blot analysis of CCDC55 in human brain tissue lysate with CCDC55 antibody at (A) 0.5 and (B) 1 ug/mL



Immunofluorescence of CCDC55 in mouse brain cells with CCDC55 antibody at 20 ug/mL.