

Product datasheet for **TA320039**

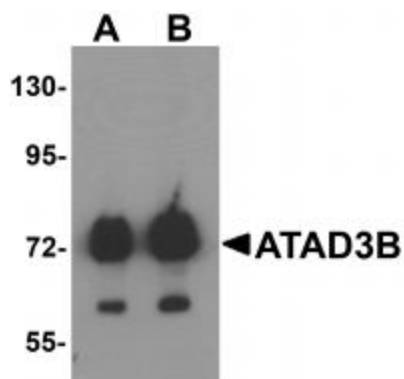
ATAD3B Rabbit Polyclonal Antibody

Product data:

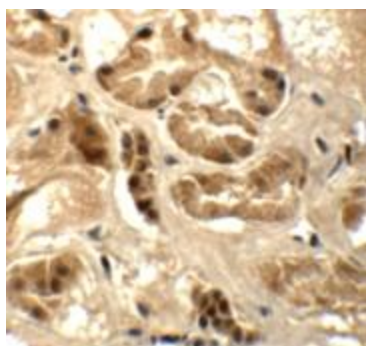
Product Type:	Primary Antibodies
Applications:	IHC, WB
Recommended Dilution:	WB: 1 - 2 ug/mL, ICC: 5 ug/mL
Reactivity:	Human
Host:	Rabbit
Isotype:	IgG
Clonality:	Polyclonal
Immunogen:	ATAD3B antibody was raised against a 14 amino acid synthetic peptide near the carboxy terminus of human ATAD3B.
Formulation:	ATAD3B Antibody is supplied in PBS containing 0.02% sodium azide.
Concentration:	1ug/ul
Purification:	ATAD3B Antibody is affinity chromatography purified via peptide column.
Conjugation:	Unconjugated
Storage:	Store at -20°C as received.
Stability:	Stable for 12 months from date of receipt.
Gene Name:	ATPase family, AAA domain containing 3B
Database Link:	NP_114127 Entrez Gene 83858 Human Q5T9A4
Background:	ATAD3B Antibody: ATAD3B is a member of the AAA ATPase family, a family of proteins that catalyze ATP into ADP and are involved in several cellular functions such as cell-cycle regulation, protein proteolysis and transport. The AAA ATPase family is characterized by a highly conserved AAA motif containing Walker homology sequences and imparting ATPase activity. Mitochondrial membrane proteins ATAD3A/B contribute to the stabilization of nucleoids and may participate in the transformation pathway and the chemosensitivity of oligodendrogliomas. The gene encoding ATAD3A/B/C maps to human chromosome 1 and has been suggested to be an anti-apoptotic marker.
Synonyms:	AAA-TOB3; TOB3


[View online »](#)

Product images:



Western blot analysis of ATAD3B in human kidney tissue lysate with ATAD3B antibody at (A) 1 and (B) 2 $\mu\text{g/mL}$.



Immunohistochemistry of ATAD3B in human kidney tissue with ATAD3B antibody at 5 $\mu\text{g/mL}$.