

## Product datasheet for **TA320037**

### Calneuron 1 (CALN1) Rabbit Polyclonal Antibody

#### Product data:

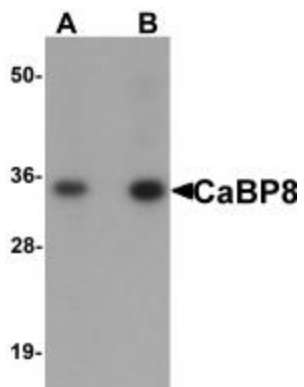
Product Type:	Primary Antibodies
Applications:	WB
Recommended Dilution:	WB: 1 - 2 ug/mL, IF: 20 ug/mL
Reactivity:	Human, Mouse, Rat
Host:	Rabbit
Isotype:	IgG
Clonality:	Polyclonal
Immunogen:	CaBP8 antibody was raised against a 16 amino acid synthetic peptide near the amino terminus of human CaBP8.
Formulation:	CaBP8 Antibody is supplied in PBS containing 0.02% sodium azide.
Concentration:	1ug/ul
Purification:	CaBP8 Antibody is affinity chromatography purified via peptide column.
Conjugation:	Unconjugated
Storage:	Store at -20°C as received.
Stability:	Stable for 12 months from date of receipt.
Gene Name:	calneuron 1
Database Link:	<a href="#">NP_113656</a> <a href="#">Entrez Gene 83698 Human</a> <a href="#">Q9BXU9</a>
Background:	CaBP8 Antibody: Calcium binding proteins (CaBP) play a crucial role in the calcium-mediated cellular signal transduction pathway in the central nervous system. The CaBP family shares much similarity with CaM I (calmodulin), and it has been shown that CaBP proteins can substitute functionally for, and possibly augment the function of, CaM I. CaBP8, contains two EF-hand domains for calcium binding and shares 70% homology with CaBP7 and 50% homology with CaM I. It negatively regulates Golgi-to-plasma membrane trafficking by interacting with PI4KB and inhibiting its activity. Both CaBP8 and CaBP7 possess a targeting mechanism that is unique amongst the CaBPs that may contribute to differential functional Ca <sup>2+</sup> -sensing by these family members.



[View online »](#)

Synonyms: CABP8

**Product images:**



Western blot analysis of CaBP8 in 3T3 cell lysate with CaBP8 antibody at (A) 1 and (B) 2 ug/mL.