

Product datasheet for **TA320035**

RILP Rabbit Polyclonal Antibody

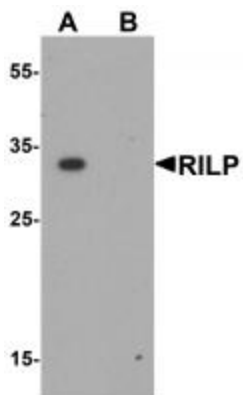
Product data:

Product Type:	Primary Antibodies
Applications:	IF, WB
Recommended Dilution:	WB: 1 ug/mL
Reactivity:	Human, Mouse
Host:	Rabbit
Isotype:	IgG
Clonality:	Polyclonal
Immunogen:	RILP antibody was raised against an 18 amino acid synthetic peptide near the center of human RILP.
Formulation:	RILP Antibody is supplied in PBS containing 0.02% sodium azide.
Concentration:	1ug/ul
Purification:	RILP Antibody is affinity chromatography purified via peptide column.
Conjugation:	Unconjugated
Storage:	Store at -20°C as received.
Stability:	Stable for 12 months from date of receipt.
Gene Name:	Rab interacting lysosomal protein
Database Link:	NP_113618 Entrez Gene 280408 Mouse Entrez Gene 83547 Human Q96NA2
Background:	RILP Antibody: The Rab interacting lysosomal protein (RILP) is lysosomal protein that interacts with RAB7, a small GTPase that controls transport to endocytic degradative compartments. It is thought that RILP is a downstream effector of RAB7 and both proteins act together in the regulation of late endocytic traffic. Overexpression of RILP caused enlarged lysosomes that are more centrally located in the cell suggesting that RILP may also be involved in the regulation of lysosomal morphology. Other evidence suggests that RILP may play a role in the biogenesis of multivesicular bodies.
Synonyms:	PP10141

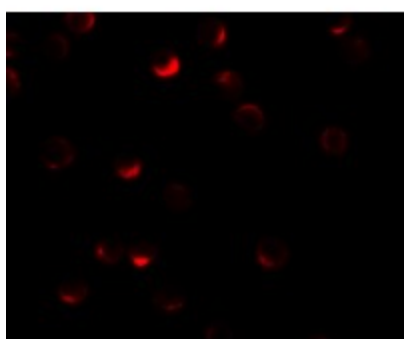


[View online »](#)

Product images:



Western blot analysis of RILP in A20 cell lysate with RILP antibody at 1 ug/mL.



Immunofluorescence of RILP in HeLa cells with RILP antibody at 20 ug/mL.



Immunocytochemistry of RILP in HeLa cells with RILP antibody at 2.5 ug/mL.