

## Product datasheet for **TA320034**

### NETO1 Rabbit Polyclonal Antibody

#### Product data:

Product Type:	Primary Antibodies
Applications:	IF, IHC, WB
Recommended Dilution:	WB: 1 - 2 ug/mL, ICC: 2.5 ug/mL, IF: 20 ug/mL
Reactivity:	Human, Mouse, Rat
Host:	Rabbit
Isotype:	IgG
Clonality:	Polyclonal
Immunogen:	NETO1 antibody was raised against an 18 amino acid synthetic peptide near the carboxy terminus of human NETO1.
Formulation:	NETO1 Antibody is supplied in PBS containing 0.02% sodium azide.
Concentration:	1ug/ul
Purification:	NETO1 Antibody is affinity chromatography purified via peptide column.
Conjugation:	Unconjugated
Storage:	Store at -20°C as received.
Stability:	Stable for 12 months from date of receipt.
Gene Name:	neuropilin and tolloid like 1
Database Link:	<a href="#">NP_694821</a> <a href="#">Entrez Gene 246317 Mouse</a> <a href="#">Entrez Gene 307206 Rat</a> <a href="#">Entrez Gene 81832 Human</a> <a href="#">Q8TDF5</a>
Background:	NETO1 Antibody: Neuropilin and tolloid-like protein 1 (NETO1) is involved in the development and/or maintenance of neuronal circuitry. It is a type I transmembrane protein that is expressed in the brain and retina. NETO1 contains one LDL-receptor class A domain and two CUB domains and is either membrane-bound or secreted. It has three alternatively spliced isoforms, the first two of which are retina-specific and the third of which is found in both retina and brain tissue. Furthermore, as an accessory subunit of the neuronal N-methyl-D-aspartate receptor (NMDAR), it regulates long-term NMDA receptor-dependent synaptic plasticity and cognition, at least in the context of spatial learning and memory.

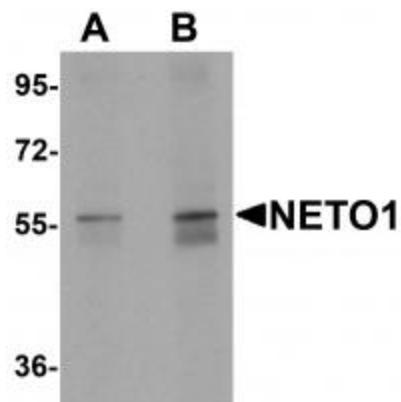


[View online »](#)

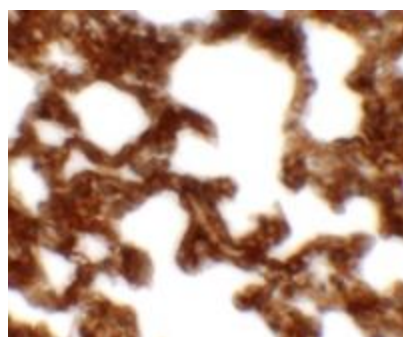
**Synonyms:** BCTL1; BTCL1; neuropilin (NRP) and tolloid (TLL)-like 1; neuropilin- and tolloid-like protein 1; OTTHUMP00000163732

**Protein Families:** Druggable Genome, Transmembrane

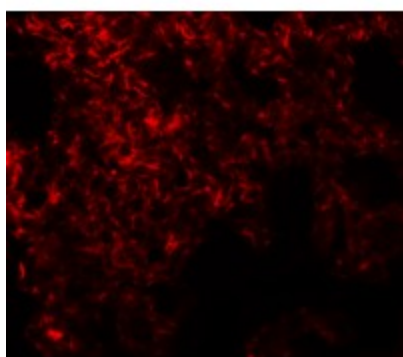
**Product images:**



Western blot analysis of NETO1 in human lung tissue lysate with NETO1 antibody at (A) 1 and (B) 2 ug/mL.



Immunohistochemistry of NETO1 in rat lung tissue with NETO1 antibody at 2.5 ug/mL.



Immunofluorescence of NETO1 in rat lung tissue with NETO1 antibody at 20 ug/mL.