

Product datasheet for **TA320032**

KHDC1 Rabbit Polyclonal Antibody

Product data:

Product Type:	Primary Antibodies
Applications:	IHC, WB
Recommended Dilution:	WB: 1 - 2 ug/mL
Reactivity:	Human, Mouse, Rat
Host:	Rabbit
Isotype:	IgG
Clonality:	Polyclonal
Immunogen:	KHDC1 antibody was raised against a 15 amino acid peptide near the amino terminus of human KHDC1.
Formulation:	KHDC1 Antibody is supplied in PBS containing 0.02% sodium azide.
Concentration:	1ug/ul
Purification:	KHDC1 Antibody is affinity chromatography purified via peptide column.
Conjugation:	Unconjugated
Storage:	Store at -20°C as received.
Stability:	Stable for 12 months from date of receipt.
Predicted Protein Size:	Predicted: 18 kDa; Observed: 26 kDa
Gene Name:	KH homology domain containing 1
Database Link:	NP_085045 Entrez Gene 689090 Rat Entrez Gene 80759 Human Q4VXA5
Background:	KHDC1 Antibody: KHDC1 family members are K-homology (KH) domain-containing RNA binding proteins that are involved in various aspects of RNA metabolism, ranging from transcription to RNA splicing, transportation, translation, and stability (1). KHDC1 is highly expressed in oocytes and interacts with cytoplasmic polyadenylation element-binding protein 1 (CPEB1), a key translational regulator controlling the polyA length of mRNAs (2,3). KHDC1 functions as a global translational repressor and induces apoptosis through an ER-dependent signaling pathway and that the C-terminal putative trans-membrane motif (TMM) is critical for its activities (3,4).

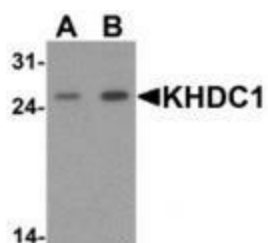


[View online »](#)

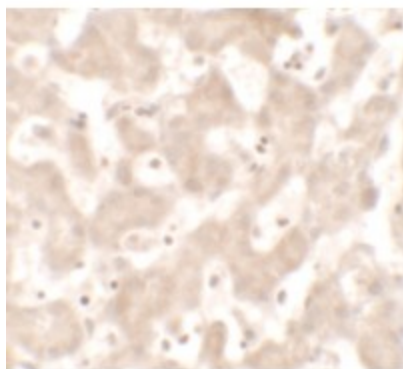
Synonyms: bA257K9.4; C6orf147; C6orf148; Em:AC019205.8; NDG1

Protein Families: Transmembrane

Product images:



Western blot analysis of KHDC1 in rat liver tissue lysate with KHDC1 antibody at (A) 0.5 and (B) 1 ug/mL.



Immunohistochemistry of KHDC1 in human liver tissue with KHDC1 antibody at 5 ug/mL.