

Product datasheet for **TA320031**

KIAA1688 (ARHGAP39) Rabbit Polyclonal Antibody

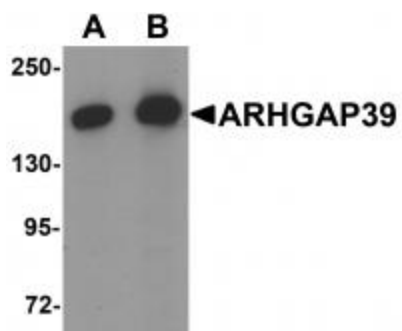
Product data:

Product Type:	Primary Antibodies
Applications:	WB
Recommended Dilution:	WB: 1 - 2 ug/mL
Reactivity:	Human, Mouse, Rat
Host:	Rabbit
Isotype:	IgG
Clonality:	Polyclonal
Immunogen:	ARHGAP39 antibody was raised against an 18 amino acid synthetic peptide near the carboxy terminus of human ARHGAP39.
Formulation:	ARHGAP39 Antibody is supplied in PBS containing 0.02% sodium azide.
Concentration:	1ug/ul
Purification:	ARHGAP39 Antibody is affinity chromatography purified via peptide column.
Conjugation:	Unconjugated
Storage:	Store at -20°C as received.
Stability:	Stable for 12 months from date of receipt.
Gene Name:	Rho GTPase activating protein 39
Database Link:	NP_079527 Entrez Gene 223666 Mouse Entrez Gene 500901 Rat Entrez Gene 80728 Human Q9C0H5
Background:	ARHGAP39 Antibody: Rho GTPases are important regulators of the actin cytoskeleton and consequently influence the shape and migration of cells. GTPase-activating proteins (GAPs) accelerate the intrinsic rate of GTP hydrolysis of Ras-related proteins. ARHGAP39 (Rho GTPase activating protein 39) is a 1, 083 amino acid nuclear protein that contains one MyTH4 domain, one Rho GAP domain and two WW domains. It is encoded by a gene located on human chromosome 8, which is associated with a variety of diseases and malignancies. ARHGAP39 regulates robo signaling and plays important roles in axon guidance.
Synonyms:	CrGAP; Vilse



[View online »](#)

Product images:



Western blot analysis of ARHGAP39 in A20 cell lysate with ARHGAP39 antibody at (A) 1 and (B) 2 ug/mL