

Product datasheet for **TA320029**

MTERF2 Rabbit Polyclonal Antibody

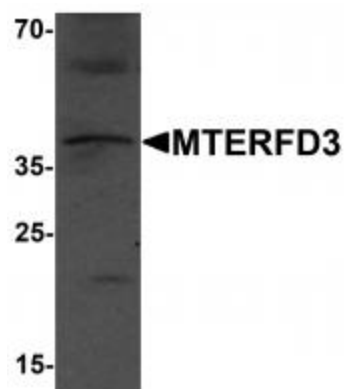
Product data:

Product Type:	Primary Antibodies
Applications:	IHC, WB
Recommended Dilution:	WB: 1 ug/mL
Reactivity:	Human, Mouse
Host:	Rabbit
Isotype:	IgG
Clonality:	Polyclonal
Immunogen:	MTERFD3 antibody was raised against an 18 amino acid peptide near the amino terminus of human MTERFD3 .
Formulation:	MTERFD3 Antibody is supplied in PBS containing 0.02% sodium azide.
Concentration:	1ug/ul
Purification:	MTERFD3 Antibody is affinity chromatography purified via peptide column.
Conjugation:	Unconjugated
Storage:	Store at -20°C as received.
Stability:	Stable for 12 months from date of receipt.
Predicted Protein Size:	Predicted: 42 kDa; Observed: 40 kDa
Gene Name:	mitochondrial transcription termination factor 2
Database Link:	NP_079474 Entrez Gene 80298 Human Q49AM1
Background:	MTERFD3 Antibody: Members of the mTERF (mitochondrial transcription termination factor) family, are mitochondrial proteins that are believed to be transcription termination factors. MTERFD3 was initially identified through differential display analysis and is expressed primarily in heart, liver, pancreas and skeletal muscle. MTERFD3 is believed to be involved in cell cycle regulation and cell growth by modulating mitochondrial transcription, and may be a serum-inhibitory factor.
Synonyms:	MTERFD3; mTERFL

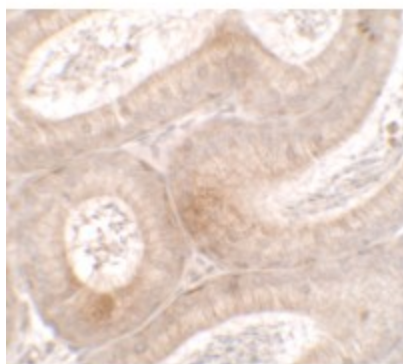


[View online »](#)

Product images:



Western blot analysis of MTERFD3 in human testis tissue lysate with MTERFD3 antibody at 1 ug/mL.



Immunohistochemistry of MTERFD3 in mouse testis tissue with MTERFD3 antibody at 2.5 ug/mL.