

## Product datasheet for **TA320028**

### SCUBE1 Rabbit Polyclonal Antibody

#### Product data:

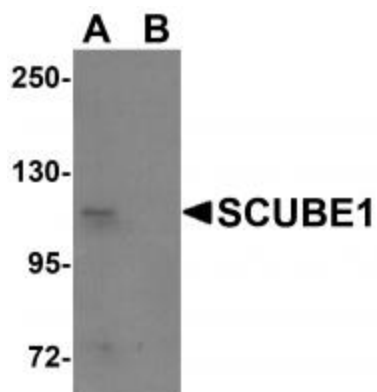
Product Type:	Primary Antibodies
Applications:	IF, WB
Recommended Dilution:	WB: 1 ug/mL, ICC: 20 ug/mL, IF: 20 ug/mL
Reactivity:	Human
Host:	Rabbit
Isotype:	IgG
Clonality:	Polyclonal
Immunogen:	SCUBE1 antibody was raised against a 14 amino acid synthetic peptide near the center of human SCUBE1.
Formulation:	SCUBE1 Antibody is supplied in PBS containing 0.02% sodium azide.
Concentration:	1ug/ul
Purification:	SCUBE1 Antibody is affinity chromatography purified via peptide column.
Conjugation:	Unconjugated
Storage:	Store at -20°C as received.
Stability:	Stable for 12 months from date of receipt.
Gene Name:	signal peptide, CUB domain and EGF like domain containing 1
Database Link:	<a href="#">NP_766638</a> <a href="#">Entrez Gene 80274 Human</a> <a href="#">Q8IWY4</a>
Background:	SCUBE1 Antibody: SCUBE1 is an EGF-related protein with a CUB (C1s-like) domain that is expressed primarily in the developing gonad, nervous system, somites, surface ectoderm and limb buds. The N-terminal EGF-like repeats of SCUBE1 participate in the formation of adhesions in a Ca <sup>2+</sup> -dependent fashion. In contrast, the C-terminal cysteine-rich motifs and CUB domain can directly bind and antagonize bone morphogenic protein activity; genetic ablation of this region resulted in brain malformation in mice embryos, suggesting SCUBE1 plays a role in brain morphogenesis. SCUBE1 has also been implicated in early craniofacial development in mice.
Synonyms:	SCUBE1



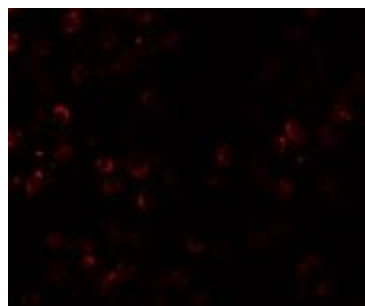
[View online »](#)

Protein Families: Druggable Genome, Secreted Protein

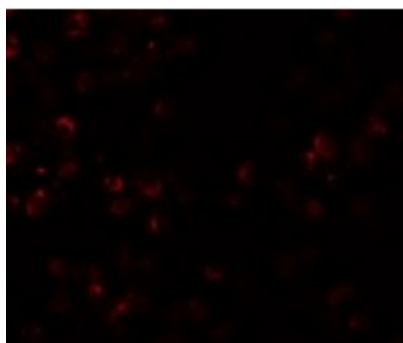
### Product images:



Western blot analysis of SCUBE1 in Daudi cell lysate with SCUBE1 antibody at 1 ug/mL in (A) the absence and (B) the presence of blocking peptide.



Immunocytochemistry of SCUBE1 in Daudi cells with SCUBE1 antibody at 20 ug/mL.



Immunofluorescence of SCUBE1 in Daudi cells with SCUBE1 antibody at 20 ug/mL.