

## Product datasheet for **TA320027**

### MYCT1 Rabbit Polyclonal Antibody

#### Product data:

Product Type:	Primary Antibodies
Applications:	WB
Recommended Dilution:	WB: 1 - 2 ug/mL
Reactivity:	Human, Mouse, Rat
Host:	Rabbit
Isotype:	IgG
Clonality:	Polyclonal
Immunogen:	MYCT1 antibody was raised against a 17 amino acid synthetic peptide near the carboxy terminus of human MYCT1.
Formulation:	MYCT1 Antibody is supplied in PBS containing 0.02% sodium azide.
Concentration:	1ug/ul
Purification:	MYCT1 Antibody is affinity chromatography purified via peptide column.
Conjugation:	Unconjugated
Storage:	Store at -20°C as received.
Stability:	Stable for 12 months from date of receipt.
Predicted Protein Size:	26 kDa
Gene Name:	myc target 1
Database Link:	<a href="#">NP_079383</a> <a href="#">Entrez Gene 68632 Mouse</a> <a href="#">Entrez Gene 292264 Rat</a> <a href="#">Entrez Gene 80177 Human</a> <a href="#">Q8N699</a>



[View online »](#)

**Background:**

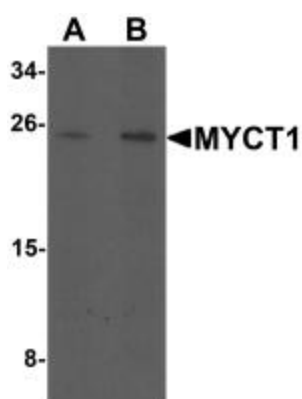
MYCT1 Antibody: MYCT1 was initially identified as a novel target of the c-Myc oncogene in myeloid cells. It is a widely expressed nuclear protein whose overexpression can promote apoptosis, alteration of morphology, enhancement of anchorage-independent cell growth, tumorigenic conversion, promotion of genomic instability, and inhibition of hematopoietic differentiation. MYCT1 binds to the promoters of several c-Myc-regulated genes and it has been suggested that the phenotypes seen in MYCT1-overexpressing cells are a result of the deregulation of these genes. RUNX1-ETO, a fusion protein made up of RUNX1 and ETO, is thought to deregulate the proliferation and responsiveness of human hematopoietic progenitor cells downstream of MYCT1.

**Synonyms:**

MTLC

**Protein Families:**

Transmembrane

**Product images:**

Western blot analysis of MYCT1 in rat lung tissue lysate with MYCT1 antibody at (A) 1 and (B) 2 ug/mL.