

## Product datasheet for **TA320025**

### FOXRED2 Rabbit Polyclonal Antibody

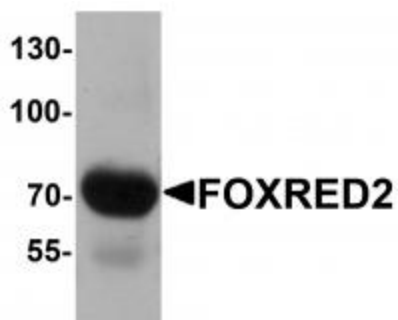
#### Product data:

Product Type:	Primary Antibodies
Applications:	IF, WB
Recommended Dilution:	WB: 1 ug/mL, IF: 20 ug/mL
Reactivity:	Human
Host:	Rabbit
Isotype:	IgG
Clonality:	Polyclonal
Immunogen:	FOXRED2 antibody was raised against a 17 amino acid synthetic peptide near the amino terminus of human FOXRED2.
Formulation:	FOXRED2 Antibody is supplied in PBS containing 0.02% sodium azide.
Concentration:	1ug/ul
Purification:	FOXRED2 Antibody is affinity chromatography purified via peptide column.
Conjugation:	Unconjugated
Storage:	Store at -20°C as received.
Stability:	Stable for 12 months from date of receipt.
Gene Name:	FAD dependent oxidoreductase domain containing 2
Database Link:	<a href="#">NP_001095841</a> <a href="#">Entrez Gene 80020 Human</a> <a href="#">Q8IWF2</a>
Background:	FOXRED2 Antibody: FOXRED2, also known as ERFAD, is an endoplasmic reticulum (ER) luminal flavoprotein which may function in ER associated degradation (ERAD). It has been proposed to bind non-native proteins in the endoplasmic reticulum and target them to the ubiquitination machinery for subsequent degradation. Upon knockdown of FOXRED2, the degradation of the ERAD model substrate ribophorin 332 is delayed, and the overall level of polyubiquitinated cellular proteins is decreased. Defects in the related protein FOXRED1 are a cause of mitochondrial complex I deficiency (MT-C1D), suggesting the FOXRED2 may also play a role in MT-C1D.
Synonyms:	ERFAD

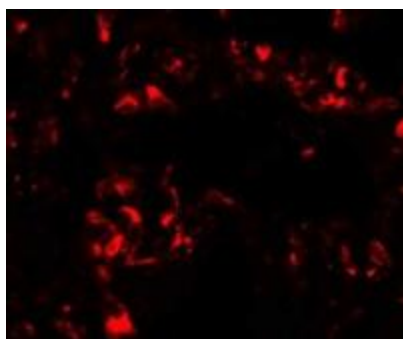

[View online »](#)

Protein Families: Druggable Genome

### Product images:



Western blot analysis of FOXRED2 in human lung tissue lysate with FOXRED2 antibody at 1 ug/mL.



Immunofluorescence of FOXRED2 in human lung cells with FOXRED2 antibody at 20 ug/mL.