

Product datasheet for **TA320024**

ESRP2 Rabbit Polyclonal Antibody

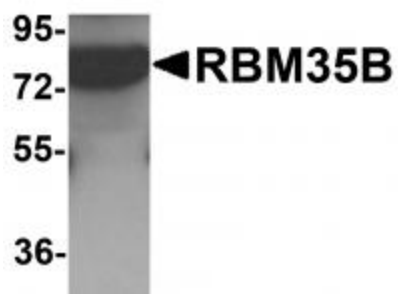
Product data:

Product Type:	Primary Antibodies
Applications:	IF, IHC, WB
Recommended Dilution:	WB: 1 ug/mL, ICC: 5 ug/mL, IF: 20 ug/mL
Reactivity:	Human, Mouse
Host:	Rabbit
Isotype:	IgG
Clonality:	Polyclonal
Immunogen:	RBM35B antibody was raised against a 17 amino acid synthetic peptide near the carboxy terminus of human RBM35B.
Formulation:	RBM35B Antibody is supplied in PBS containing 0.02% sodium azide.
Concentration:	1ug/ul
Purification:	RBM35B Antibody is affinity chromatography purified via peptide column.
Conjugation:	Unconjugated
Storage:	Store at -20°C as received.
Stability:	Stable for 12 months from date of receipt.
Gene Name:	epithelial splicing regulatory protein 2
Database Link:	NP_079215 Entrez Gene 77411 Mouse Entrez Gene 80004 Human Q9H6T0
Background:	RBM35B Antibody: RBM35A, also known as ESRP2, is a mRNA splicing factor that with its related protein RBM35A (ESRP1) are coordinators of an epithelial cell-type-specific splicing program. Both RBM35B and RBM35A are involved in posttranscriptional regulation of a number of genes such as FGFR2, CD44, CTNND1, and ENAH by exerting a differential effect on protein translation via 5' UTRs of mRNAs, suggesting that these proteins are global regulators of an epithelial regulatory network. Loss of this global ESRP-regulated epithelial splicing programme induces the phenotypic changes in cell morphology that are observed during the epithelial-mesenchymal transition.
Synonyms:	RBM35B

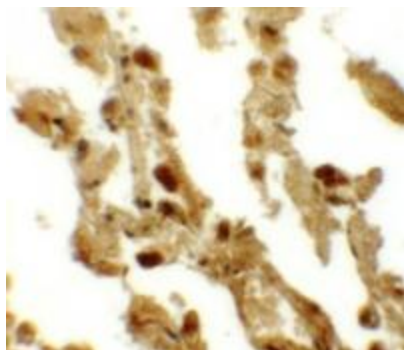


[View online »](#)

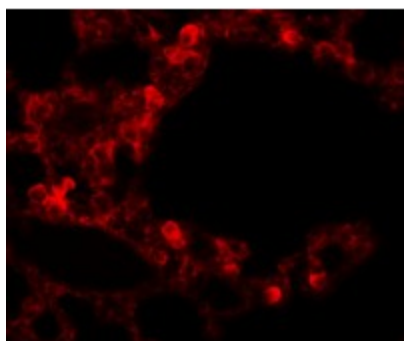
Product images:



Western blot analysis of RBM35B in human lung tissue lysate with RBM35B antibody at 1 ug/mL.



Immunohistochemistry of RBM35B in human lung tissue with RBM35B antibody at 5 ug/mL.



Immunofluorescence of RBM35B in human lung tissue cells with RBM35B antibody at 20 ug/mL.