

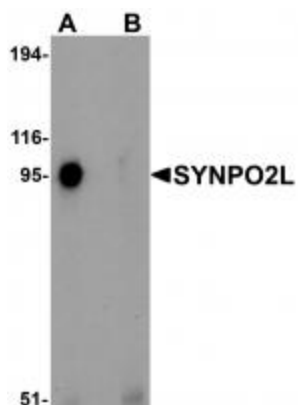
Product datasheet for **TA320023**

SYNPO2L Rabbit Polyclonal Antibody

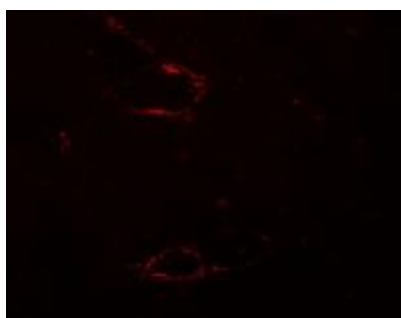
Product data:

Product Type:	Primary Antibodies
Applications:	IF, IHC, WB
Recommended Dilution:	WB: 1 ug/mL, ICC: 5 ug/mL, IF: 20 ug/mL
Reactivity:	Human, Mouse
Host:	Rabbit
Isotype:	IgG
Clonality:	Polyclonal
Immunogen:	SYNPO2L antibody was raised against a 19 amino acid synthetic peptide near the amino terminus of human SYNPO2L.
Formulation:	SYNPO2L Antibody is supplied in PBS containing 0.02% sodium azide.
Concentration:	1ug/ul
Purification:	SYNPO2L Antibody is affinity chromatography purified via peptide column.
Conjugation:	Unconjugated
Storage:	Store at -20°C as received.
Stability:	Stable for 12 months from date of receipt.
Gene Name:	synaptopodin 2 like
Database Link:	BAD37139 Entrez Gene 79933 Human Q9H987
Background:	SYNPO2L Antibody: SYNPO2L was initially identified as a novel heart-enriched gene that encodes a cytoskeletal protein highly expressed in the Z-disc of heart and skeletal muscle, associates with actin and interacts with a-actinin. It is a member of the synaptopodin family, sharing greatest homology with Synaptopodin 2. Recent studies have shown that SYNPO2L, while primarily localized to the sarcomere, can also translocate to the nucleus. A knockdown of SYNPO2L in zebrafish resulted in aberrant cardiac and skeletal muscle development and function, suggesting that it is a critical component of the sarcomere and plays an important role in muscle development.
Synonyms:	FLJ12921

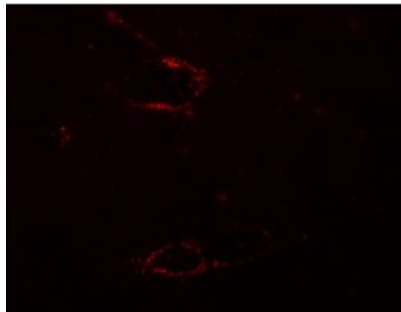
[View online »](#)

Product images:


Western blot analysis of SYNPO2L in human thymus tissue lysate with SYNPO2L antibody at 1 ug/mL in (A) the absence and (B) the presence of blocking peptide.



Immunohistochemistry of SYNPO2L in mouse skeletal muscle tissue with SYNPO2L antibody at 5 ug/mL.



Immunofluorescence of SYNPO2L in mouse skeletal muscle tissue with SYNPO2L antibody at 20 ug/mL.