

Product datasheet for **TA320017**

OGFOD2 Rabbit Polyclonal Antibody

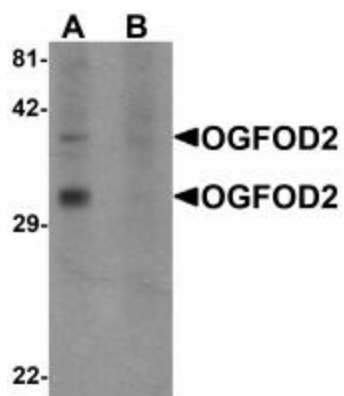
Product data:

Product Type:	Primary Antibodies
Applications:	WB
Recommended Dilution:	WB: 1 ug/mL
Reactivity:	Human, Mouse, Rat
Host:	Rabbit
Isotype:	IgG
Clonality:	Polyclonal
Immunogen:	OGFOD2 antibody was raised against a 17 amino acid synthetic peptide near the center of human OGFOD2.
Formulation:	OGFOD2 Antibody is supplied in PBS containing 0.02% sodium azide.
Concentration:	1ug/ul
Purification:	OGFOD2 Antibody is affinity chromatography purified via peptide column.
Conjugation:	Unconjugated
Storage:	Store at -20°C as received.
Stability:	Stable for 12 months from date of receipt.
Gene Name:	2-oxoglutarate and iron dependent oxygenase domain containing 2
Database Link:	NP_078899 Entrez Gene 66627 Mouse Entrez Gene 288657 Rat Entrez Gene 79676 Human Q6N063
Background:	OGFOD2 Antibody: OGFOD2 is a member of the 2-OG-Fe(II) dioxygenase family which plays an important role in ischemic survival and stress. Like the related protein OGFOD1, OGFOD2 is an oxidoreductase containing a Prolyl 4-hydroxylase alpha subunit. Little is known about the function of OGFOD2, but its similarity to OGFOD1 suggests that it is a novel stress granule component that may play an important proapoptotic role in the regulation of translation and HRI-mediated phosphorylation of eIF2alpha in cells.
Synonyms:	DKFZp686H15154; FLJ13491; FLJ37501; MGC120434; MGC120436



[View online »](#)

Product images:



Western blot analysis of OGFOD2 in 293 cell lysate with OGFOD2 antibody at 1 ug/mL in (A) the absence and (B) the presence of blocking peptide.