

## Product datasheet for **TA320016**

### NLRX1 Rabbit Polyclonal Antibody

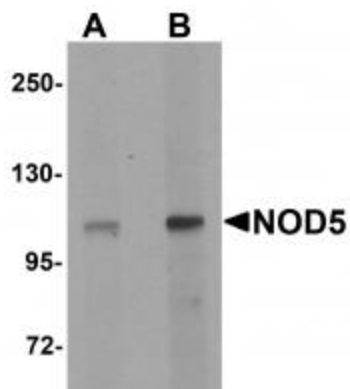
#### Product data:

Product Type:	Primary Antibodies
Applications:	IF, IHC, WB
Recommended Dilution:	WB: 1 - 2 ug/mL, ICC: 10 ug/mL, IF: 20 ug/mL
Reactivity:	Human, Mouse, Rat
Host:	Rabbit
Isotype:	IgG
Clonality:	Polyclonal
Immunogen:	NOD5 antibody was raised against a 14 amino acid synthetic peptide near the amino terminus of human NOD5.
Formulation:	NOD5 Antibody is supplied in PBS containing 0.02% sodium azide.
Concentration:	1 mg/ml
Purification:	NOD5 Antibody is affinity chromatography purified via peptide column.
Conjugation:	Unconjugated
Storage:	Store at -20°C as received.
Stability:	Stable for 12 months from date of receipt.
Gene Name:	NLR family member X1
Database Link:	<a href="#">NP_078894</a> <a href="#">Entrez Gene 270151 Mouse</a> <a href="#">Entrez Gene 315599 Rat</a> <a href="#">Entrez Gene 79671 Human</a> <a href="#">Q86UT6</a>
Background:	NOD5 Antibody: NOD5, also known as NLRX1, is a member of the NOD (nucleotide-binding oligomerization domain) family, a group of proteins that are involved in innate immune defense. NOD5 localizes to the mitochondrial outer membrane and interacts with the virus-induced signaling adapter protein VISA. Unlike a subset of NOD-like receptors (NLRs) such as NOD1 and NOD2 which trigger pro-inflammatory cascades, and other NLRs that induce the caspase 1 inflammasome in response to immune challenges, NOD5 amplifies NF-κB and JNK pathways by inducing reactive oxygen species production.
Synonyms:	CLR11.3; DLNB26; NOD5; NOD9; NOD26
Protein Pathways:	RIG-I-like receptor signaling pathway

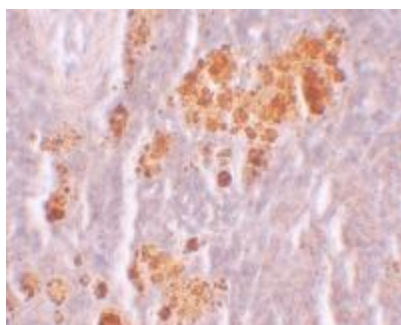


[View online »](#)

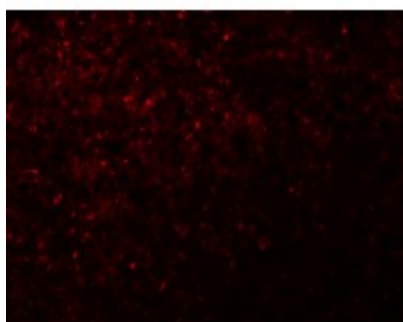
## Product images:



Western blot analysis of NOD5 in rat spleen tissue cell lysate with NOD5 antibody at (A) 1 and (B) 2 ug/mL.



Immunohistochemistry of NOD5 in rat spleen tissue with NOD5 antibody at 10 ug/mL.



Immunofluorescence of NOD5 in rat spleen tissue with NOD5 antibody at 20 ug/mL.