

Product datasheet for **TA320014**

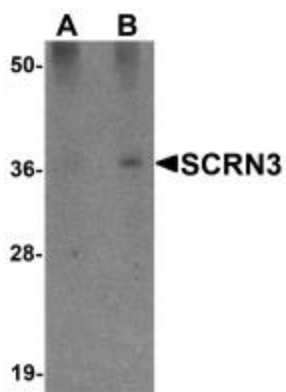
SCRN3 Rabbit Polyclonal Antibody

Product data:

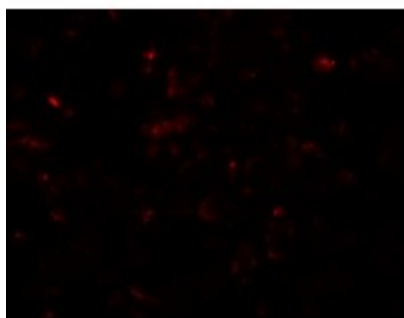
Product Type:	Primary Antibodies
Applications:	IF, WB
Recommended Dilution:	WB: 1 - 2 ug/mL, ICC: 20 ug/mL, IF: 20 ug/mL
Reactivity:	Human, Mouse
Host:	Rabbit
Isotype:	IgG
Clonality:	Polyclonal
Immunogen:	SCRN3 antibody was raised against a 15 amino acid synthetic peptide near the center of human SCRIN3.
Formulation:	SCRN3 Antibody is supplied in PBS containing 0.02% sodium azide.
Concentration:	1ug/ul
Purification:	SCRN3 Antibody is affinity chromatography purified via peptide column.
Conjugation:	Unconjugated
Storage:	Store at -20°C as received.
Stability:	Stable for 12 months from date of receipt.
Gene Name:	secernin 3
Database Link:	AAI19685 Entrez Gene 79634 Human Q0VDG4
Background:	SCRN3 Antibody: SCRIN3 is a member of the secernin family of proteins which includes the homologous SCRIN1, a protein that was first identified as being involved in the regulation of exocytosis from peritoneal mast cells. Little is known of SCRIN3, but studies have shown that SCRIN1 may possess epitopes that function as tumor-associated antigens in gastric cancers and increased SCRIN1 expression in patients with colorectal cancer correlated with poor prognosis, suggesting that SCRIN3 may also be involved in protein secretion or the regulation of cell growth.
Synonyms:	SES3


[View online »](#)

Product images:



Western blot analysis of SCR3 in 293 cell tissue lysate with SCR3 antibody at (A) 1 and (B) 2 ug/mL.



Immunofluorescence of SCR3 in 293 cells with SCR3 antibody at 20 ug/mL.



Immunocytochemistry of SCR3 in 293 cells with SCR3 antibody at 20 ug/mL.