

Product datasheet for **TA320013**

TCTN1 Rabbit Polyclonal Antibody

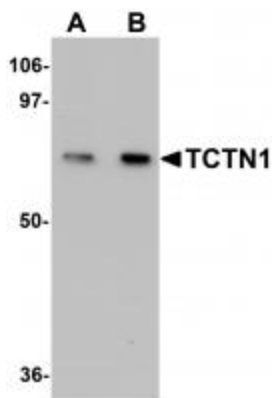
Product data:

Product Type:	Primary Antibodies
Applications:	IF, IHC, WB
Recommended Dilution:	WB: 1 - 2 ug/mL, ICC: 5 ug/mL, IF: 20 ug/mL
Reactivity:	Human, Mouse
Host:	Rabbit
Isotype:	IgG
Clonality:	Polyclonal
Immunogen:	TCTN1 antibody was raised against a 15 amino acid synthetic peptide near the amino terminus of human TCTN1.
Formulation:	TCTN1 Antibody is supplied in PBS containing 0.02% sodium azide.
Concentration:	1ug/ul
Purification:	TCTN1 Antibody is affinity chromatography purified via peptide column.
Conjugation:	Unconjugated
Storage:	Store at -20°C as received.
Stability:	Stable for 12 months from date of receipt.
Gene Name:	tectonic family member 1
Database Link:	NP_001076007 Entrez Gene 79600 Human Q2MV58
Background:	TCTN1 Antibody: TCTN1 is the founding member of the Tectonic protein family, a group of evolutionarily conserved secreted and transmembrane proteins that regulate the Hedgehog (Hh)-mediated patterning of the neural tube. During embryonic development, TCTN1 is expressed in regions that participate in Hh signaling, beginning in the gastrulation stages in the ventral node. Mice expressing mutant TCTN1 die between E13.5 and E16.5 and display holoprosencephaly, a defect associated with reduced Hh signaling, indicating the role of TCTN1 as an Hh activator. At later stages in development, TCTN1 is thought to also act as a repressor on the Hh pathway in the anterior and posterior neural tube.
Synonyms:	JBTS13; TECT1

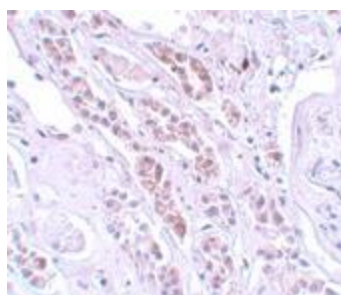


[View online »](#)

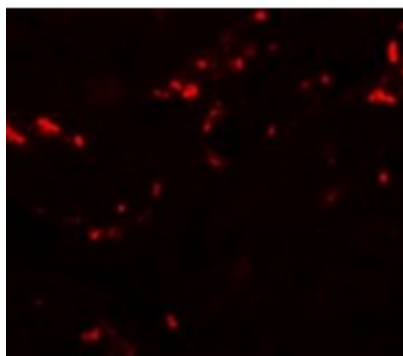
Product images:



Western blot analysis of TCTN1 in mouse kidney tissue lysate with TCTN1 antibody at (A) 1 and (B) 2ug/mL.



Immunohistochemistry of TCTN1 in human kidney tissue with TCTN1 antibody at 5 ug/mL.



Immunofluorescence of TCTN1 in Human Kidney cells with TCTN1 antibody at 20 ug/mL.