

Product datasheet for **TA320012**

CORO7 Rabbit Polyclonal Antibody

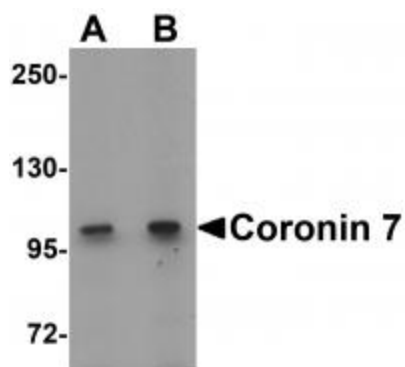
Product data:

Product Type:	Primary Antibodies
Applications:	IF, IHC, WB
Recommended Dilution:	WB: 1 - 2 ug/mL, ICC: 2.5 ug/mL, IF: 20 ug/mL
Reactivity:	Human, Mouse, Rat
Host:	Rabbit
Isotype:	IgG
Clonality:	Polyclonal
Immunogen:	Coronin 7 antibody was raised against an 17 amino acid synthetic peptide near the carboxy terminus of human Coronin 7.
Formulation:	Coronin 7 Antibody is supplied in PBS containing 0.02% sodium azide.
Concentration:	1ug/ul
Purification:	Coronin 7 Antibody is affinity chromatography purified via peptide column.
Conjugation:	Unconjugated
Storage:	Store at -20°C as received.
Stability:	Stable for 12 months from date of receipt.
Gene Name:	coronin 7
Database Link:	NP_078811 Entrez Gene 78885 Mouse Entrez Gene 192276 Rat Entrez Gene 79585 Human P57737
Background:	Coronin 7 Antibody: Coronins, such as Coronin 7, constitute an evolutionarily conserved family of WD-repeat actin-binding proteins whose function is thought to be regulating the cytoskeleton. Unlike other cytoplasmically localized Coronins, Coronin 7 localizes in part to the Golgi complex and is thought to play a role in Golgi complex morphology and function. Other experiments indicate that Coronin 7 interacts with the anti-proliferative protein TOB1 and enhances its degradation through the SCF ubiquitin ligase (E3) complex.
Synonyms:	0610011B16Rik; CRN7; POD1

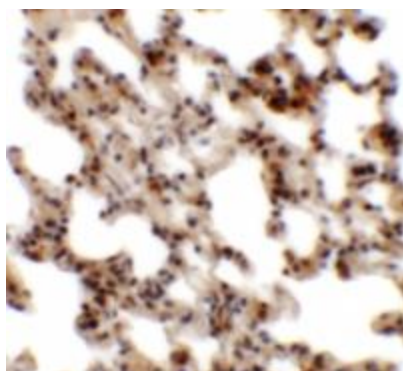


[View online »](#)

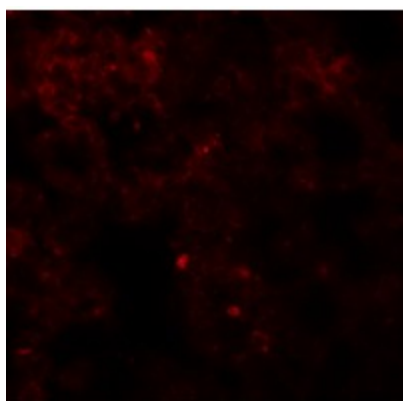
Product images:



Western blot analysis of Coronin 7 in rat lung tissue lysate with Coronin 7 antibody at (A) 1 and (B) 2 ug/mL.



Immunohistochemistry of Coronin 7 in rat lung tissue with Coronin 7 antibody at 2.5 ug/mL.



Immunofluorescence of Coronin 7 in rat lung tissue with Coronin 7 antibody at 20 ug/mL.