

Product datasheet for **TA320011**

KREMEN2 Rabbit Polyclonal Antibody

Product data:

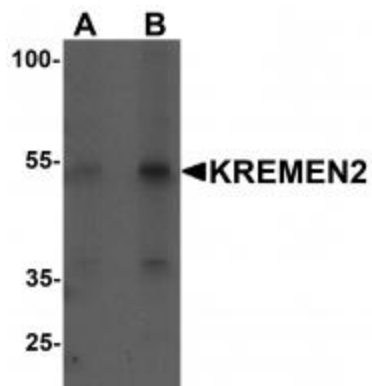
Product Type:	Primary Antibodies
Applications:	IF, WB
Recommended Dilution:	WB: 1 ug/mL
Reactivity:	Human, Mouse
Host:	Rabbit
Isotype:	IgG
Clonality:	Polyclonal
Immunogen:	KREMEN2 antibody was raised against a 15 amino acid peptide near the carboxy terminus of human KREMEN2 .
Formulation:	KREMEN2 Antibody is supplied in PBS containing 0.02% sodium azide.
Purification:	KREMEN2 Antibody is affinity chromatography purified via peptide column.
Conjugation:	Unconjugated
Storage:	Store at -20°C as received.
Stability:	Stable for 12 months from date of receipt.
Predicted Protein Size:	Predicted: 51 kDa; Observed: 54 kDa
Gene Name:	kringle containing transmembrane protein 2
Database Link:	NP_757384 Entrez Gene 79412 Human Q8NCW0
Background:	KREMEN2 Antibody: Kremen (Kringle containing protein marking the eye and the nose) proteins are type I transmembrane proteins that contain extracellular kringle, WSC and CUB domains and an intracellular region without any conserved motifs. Kremens bind a subset of the secreted Dickkopf proteins (Dkk 1, 2, and 4) with high affinity to modulate the canonical Wnt signaling pathway that is transduced by the ternary receptor complex composed of Wnt, Frizzled, and the LDL receptor related protein 5/6 (LRP5/6) co-receptor. Recent experiments have shown that KREMEN2 is a regulator of bone remodeling and raise the possibility that antagonizing KREMEN2 might prove beneficial in patients with bone loss disorders.



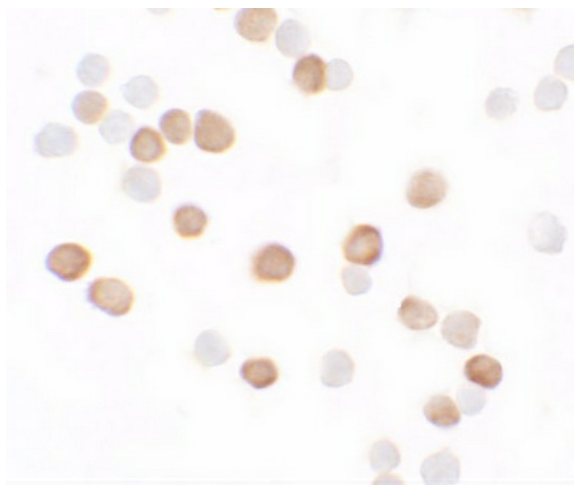
[View online »](#)

Synonyms: kringle-containing transmembrane protein 2; kringle containing transmembrane protein 2; KRM2; MGC10791; MGC16709

Product images:



Western blot analysis of KREMEN2 in HeLa cell lysate with KREMEN2 antibody at (A) 1 and (B) 2 ug/mL.



Immunocytochemistry of KREMEN2 in HeLa cells with KREMEN2 antibody at 5 ug/mL.