

Product datasheet for **TA320010**

CHCHD7 Rabbit Polyclonal Antibody

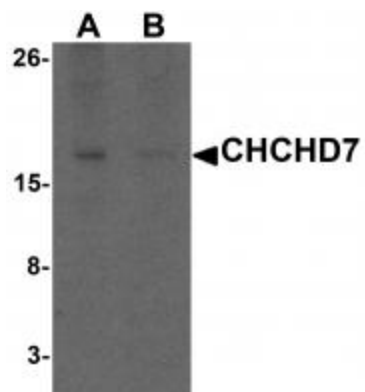
Product data:

Product Type:	Primary Antibodies
Applications:	WB
Recommended Dilution:	WB: 1 - 2 ug/mL
Reactivity:	Human, Mouse, Rat
Host:	Rabbit
Isotype:	IgG
Clonality:	Polyclonal
Immunogen:	Rabbit polyclonal CHCHD7 antibody was raised against a 15 amino acid peptide near the carboxy terminus of human CHCHD7.
Formulation:	CHCHD7 Antibody is supplied in PBS containing 0.02% sodium azide.
Concentration:	1ug/ul
Purification:	CHCHD7 Antibody is affinity chromatography purified via peptide column.
Conjugation:	Unconjugated
Storage:	Store at -20°C as received.
Stability:	Stable for 12 months from date of receipt.
Predicted Protein Size:	11 kDa
Gene Name:	coiled-coil-helix-coiled-coil-helix domain containing 7
Database Link:	NP_077276 Entrez Gene 66433 MouseEntrez Gene 684258 RatEntrez Gene 79145 Human Q9BUK0
Background:	CHCHD7 Antibody: CHCHD7 is a newly identified member of a multifamily of proteins containing a conserved (coiled coil 1)-(helix 1)-(coiled coil 2)-(helix 2) domain. Northern blot analysis revealed that the gene is ubiquitously expressed. Its biological function is unknown and the gene has hitherto not been associated with neoplasia. CHCHD7 and PLAG1 are located head-to-head about 500 bp apart in 8q12. A chromosomal aberration involving CHCHD7 is found in salivary gland pleiomorphic adenomas, the most common benign epithelial tumors of the salivary gland.
Synonyms:	COX23



[View online »](#)

Product images:



Western blot analysis of CHCHD7 in rat liver tissue lysate with CHCHD7 antibody at 1 ug/mL in (A) the absence and (B) the presence of blocking peptide.