

Product datasheet for **TA320002**

Apg3 (ATG3) Rabbit Polyclonal Antibody

Product data:

Product Type:	Primary Antibodies
Applications:	IF, IHC, WB
Recommended Dilution:	WB: 1 - 2 ug/mL, ICC: 5 ug/mL, IF: 20 ug/mL
Reactivity:	Human, Mouse, Rat
Host:	Rabbit
Isotype:	IgG
Clonality:	Polyclonal
Immunogen:	ATG3 antibody was raised against an 18 amino acid synthetic peptide near the center of human ATG3.
Formulation:	ATG3 Antibody is supplied in PBS containing 0.02% sodium azide.
Concentration:	1ug/ul
Purification:	ATG3 Antibody is affinity chromatography purified via peptide column.
Conjugation:	Unconjugated
Storage:	Store at -20°C as received.
Stability:	Stable for 12 months from date of receipt.
Gene Name:	autophagy related 3
Database Link:	NP_071933

[Entrez Gene 67841 Mouse](#)[Entrez Gene 171415 Rat](#)[Entrez Gene 64422 Human](#)
[Q9NT62](#)

Background: ATG3 Antibody: Autophagy, the process of bulk degradation of cellular proteins through an autophagosomic-lysosomal pathway is important for normal growth control and may be defective in tumor cells. It is involved in the preservation of cellular nutrients under starvation conditions as well as the normal turnover of cytosolic components. This process is negatively regulated by TOR (Target of rapamycin) through phosphorylation of autophagy protein APG1. ATG3 (APG3) is a widely expressed conjugating enzyme for APG8 lipidation, an essential step for the initiation of autophagy. It functions as an E2-like enzyme during the initial stages of autophagosome formation by catalyzing the formation of the Atg8-phosphatidylethanolamine (Atg8-PE) conjugate, which is critical for autophagy.

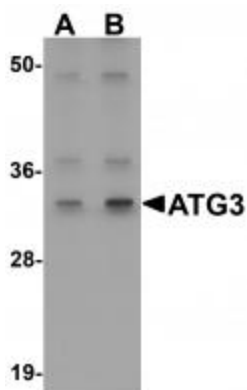


[View online »](#)

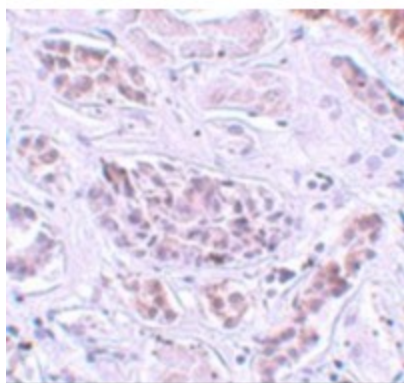
Synonyms: APG3; APG3-LIKE; APG3L; PC3-96

Protein Pathways: Regulation of autophagy

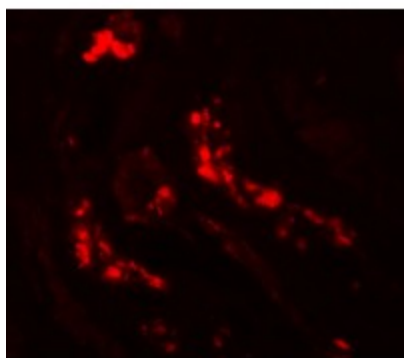
Product images:



Western blot analysis of ATG3 in Mouse kidney tissue Lysate with ATG3 antibody at (A) 1 and (B) 2 ug/mL.



Immunohistochemistry of ATG3 in human kidney tissue with ATG3 antibody at 5 ug/mL.



Immunofluorescence of ATG3 in human kidney with ATG3 antibody at 20 ug/mL.