

Product datasheet for **TA320001**

ZNF336 (GZF1) Rabbit Polyclonal Antibody

Product data:

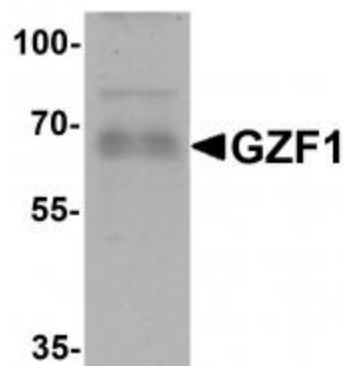
Product Type:	Primary Antibodies
Applications:	IF, IHC, WB
Recommended Dilution:	WB: 1 ug/mL, ICC: 2.5 ug/mL
Reactivity:	Human
Host:	Rabbit
Isotype:	IgG
Clonality:	Polyclonal
Immunogen:	GZF1 antibody was raised against an 18 amino acid synthetic peptide near the carboxy terminus of human GZF1.
Formulation:	GZF1 Antibody is supplied in PBS containing 0.02% sodium azide.
Concentration:	1ug/ul
Purification:	GZF1 Antibody is affinity chromatography purified via peptide column.
Conjugation:	Unconjugated
Storage:	Store at -20°C as received.
Stability:	Stable for 12 months from date of receipt.
Gene Name:	GDNF inducible zinc finger protein 1
Database Link:	NP_071927 Entrez Gene 64412 Human Q9H116
Background:	GZF1 Antibody: The GDNF-inducible zinc finger protein 1 (GZF1) is a sequence-specific transcriptional repressor with a BTB/POZ domain and ten zinc finger motifs whose expression is required for renal branching morphogenesis during kidney development. GZF1 binds to the 5'regulatory region of the homeodomain protein HOXA10, suggesting that GZF1 may play a role in morphogenesis other than kidney development. Recent experiments have indicated that GZF1 associates with nucleolin and this association is mediated by the first four zinc finger motifs of GZF1. It is thought that Nucleolin modulates the subcellular localization of GZF1 as well as its transcriptional repressor activity.
Synonyms:	ZBTB23; ZNF336



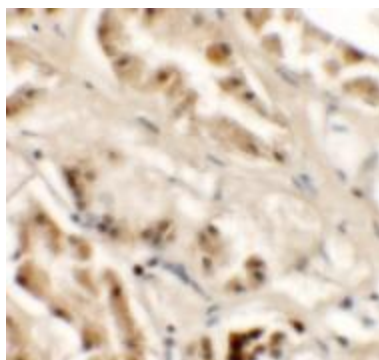
[View online »](#)

Protein Families: Transcription Factors

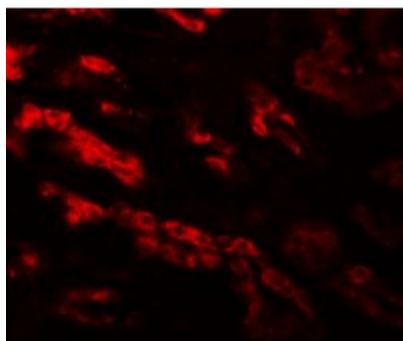
Product images:



Western blot analysis of GZF1 in human heart tissue lysate with GZF1 antibody at 1 ug/mL.



Immunohistochemistry of GZF1 in human kidney tissue with GZF1 antibody at 2.5 ug/mL.



Immunofluorescence of GZF1 in human kidney tissue with GZF1 antibody at 20 ug/mL.