

Product datasheet for **TA320000**

MS4A6A Rabbit Polyclonal Antibody

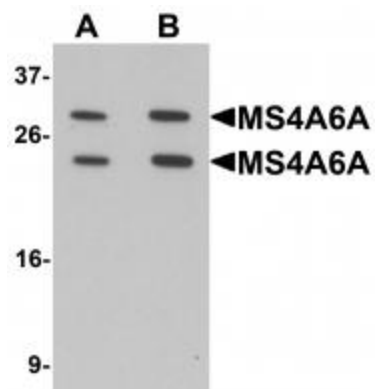
Product data:

Product Type:	Primary Antibodies
Applications:	IF, IHC, WB
Recommended Dilution:	WB: 1 - 2 ug/mL, ICC: 2.5 ug/mL, IF: 20 ug/mL
Reactivity:	Human, Mouse, Rat
Host:	Rabbit
Isotype:	IgG
Clonality:	Polyclonal
Immunogen:	MS4A6A antibody was raised against a 19 amino acid synthetic peptide near the amino terminus of human MS4A6A.
Formulation:	MS4A6A Antibody is supplied in PBS containing 0.02% sodium azide.
Concentration:	1ug/ul
Purification:	MS4A6A Antibody is affinity chromatography purified via peptide column.
Conjugation:	Unconjugated
Storage:	Store at -20°C as received.
Stability:	Stable for 12 months from date of receipt.
Gene Name:	membrane spanning 4-domains A6A
Database Link:	NP_071744 Entrez Gene 64231 Human Q9H2W1
Background:	MS4A6A Antibody: The MS4A gene family in humans includes CD20 (MS4A1), FcRbeta (MS4A2), Htm4 (MS4A3), and at least 13 other genes encoding membrane proteins, most having characteristic tetraspanning topology and similar intron/exon splice boundaries. All family members display unique expression patterns among hematopoietic cells and non-lymphoid tissues. The function of MS4A6A has been suggested to be involved in signal transduction as a component of a multimeric receptor complex in Alzheimer's disease and cancer.
Synonyms:	4SPAN3; 4SPAN3.2; CD20L3; CDA01; MS4A6; MST090; MSTP090

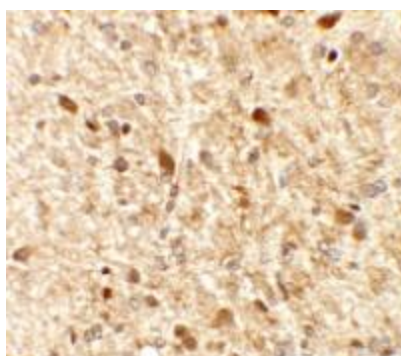


[View online »](#)

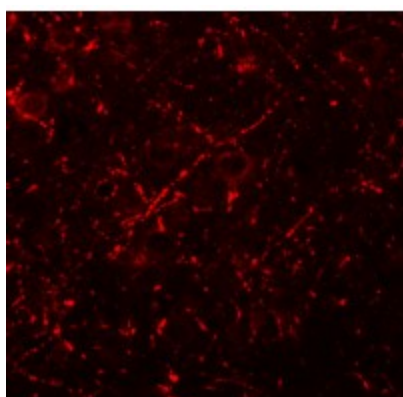
Product images:



Western blot analysis of MS4A6A in 293 cell lysate with MS4A6A antibody at (A) 1 and (B) 2 ug/mL.



Immunohistochemistry of MS4A6A in rat brain tissue with MS4A6A antibody at 2.5 ug/mL.



Immunofluorescence of MS4A6A in rat brain tissue with MS4A6A antibody at 20 ug/mL.