

## Product datasheet for **TA319998**

### SAMSN1 Rabbit Polyclonal Antibody

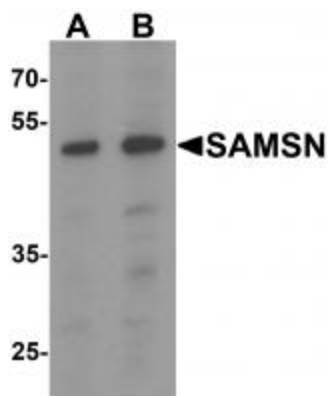
#### Product data:

Product Type:	Primary Antibodies
Applications:	IF, WB
Recommended Dilution:	WB: 1 - 2 ug/mL
Reactivity:	Human
Host:	Rabbit
Isotype:	IgG
Clonality:	Polyclonal
Immunogen:	Rabbit polyclonal SAMSN antibody was raised against an 18 amino acid peptide near the carboxy terminus of human SAMSN.
Formulation:	SAMSN Antibody is supplied in PBS containing 0.02% sodium azide.
Concentration:	1ug/ul
Purification:	SAMSN Antibody is affinity chromatography purified via peptide column.
Conjugation:	Unconjugated
Storage:	Store at -20°C as received.
Stability:	Stable for 12 months from date of receipt.
Predicted Protein Size:	41 kDa
Gene Name:	SAM domain, SH3 domain and nuclear localization signals 1
Database Link:	<a href="#">NP_071419</a> <a href="#">Entrez Gene 64092 Human</a> <a href="#">Q9NSI8</a>
Background:	SAMSN Antibody: SAMSN (HACS1) is a member of a novel gene family of putative adaptors and scaffold proteins containing SH3 and SAM (sterile alpha motif) domains. It encodes a 441 amino acid protein that is differentially expressed in hematopoietic cells and malignancies including myeloid leukemia, lymphoma, and myeloma. SAMSN has restricted expression in human tissues. It has been shown to be up-regulated by B cell activation signals and is a participant in B cell activation and differentiation. SAMSN is an immunoinhibitory adaptor that might be a useful target for immune suppression therapy.
Synonyms:	HACS1; NASH1; SASH2; SH3D6B; SLy2

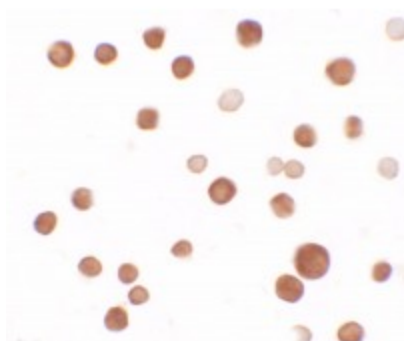


[View online »](#)

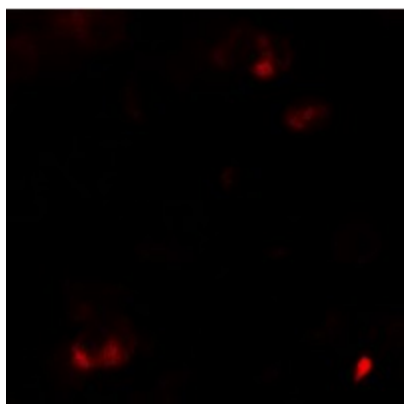
## Product images:



Western blot analysis of SAMSN in HeLa cell lysate with SAMSN antibody at (A) 0.5 and (B) 1  $\mu\text{g}/\text{mL}$ .



Immunocytochemistry of SAMSN1 in HeLa cells with SAMSN1 antibody at 2.5  $\mu\text{g}/\text{mL}$ .



Immunofluorescence of SAMSN1 in HeLa cells with SAMSN1 antibody at 5  $\mu\text{g}/\text{mL}$ .