

## Product datasheet for **TA319996**

### **PAPP A2 (PAPPA2) Rabbit Polyclonal Antibody**

#### **Product data:**

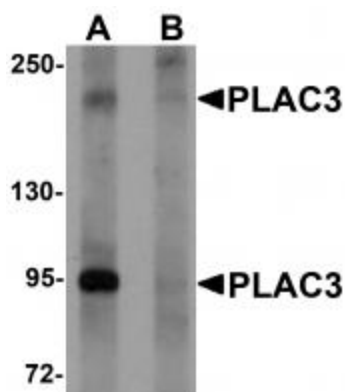
<b>Product Type:</b>	Primary Antibodies
<b>Applications:</b>	IF, WB
<b>Recommended Dilution:</b>	WB: 1 ug/mL, ICC: 10 ug/mL, IF: 20 ug/mL
<b>Reactivity:</b>	Human, Mouse, Rat
<b>Host:</b>	Rabbit
<b>Isotype:</b>	IgG
<b>Clonality:</b>	Polyclonal
<b>Immunogen:</b>	PLAC3 antibody was raised against a 15 amino acid synthetic peptide near the amino terminus of human PLAC3.
<b>Formulation:</b>	PLAC3 Antibody is supplied in PBS containing 0.02% sodium azide.
<b>Concentration:</b>	1ug/ul
<b>Purification:</b>	PLAC3 Antibody is affinity chromatography purified via peptide column.
<b>Conjugation:</b>	Unconjugated
<b>Storage:</b>	Store at -20°C as received.
<b>Stability:</b>	Stable for 12 months from date of receipt.
<b>Gene Name:</b>	pappalysin 2
<b>Database Link:</b>	<a href="#">NP_064714</a> <a href="#">Entrez Gene 23850 Mouse</a> <a href="#">Entrez Gene 680415 Rat</a> <a href="#">Entrez Gene 364027 Rat</a> <a href="#">Entrez Gene 60676 Human</a> <a href="#">Q9BXP8</a>
<b>Background:</b>	PLAC3 Antibody: PLAC3 (placenta-specific protein 3), also known as PAPP-A2, is a metalloproteinase that cleaves the insulin-like growth factor-binding protein (IGFBP)-5 in a IGF-independent fashion. It has been suggested that the cleavage of IGFBP-5 and to a lesser extent IGFBP-3 produced in the maternal decidua promotes fetoplacental growth. Recent studies have shown elevated levels of PLAC3 in hypertensive disorders of pregnancy including preeclampsia and HELLP (hemolysis, elevated liver enzymes, and low platelets) syndrome.
<b>Synonyms:</b>	PAPP-A2; PAPP-E; PAPPE; PLAC3



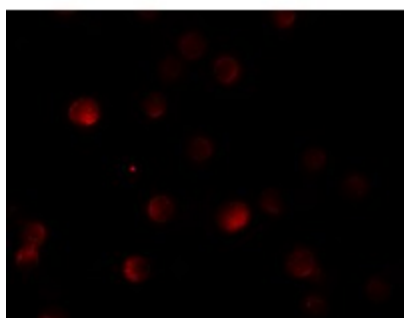
[View online »](#)

Protein Families: Protease, Secreted Protein

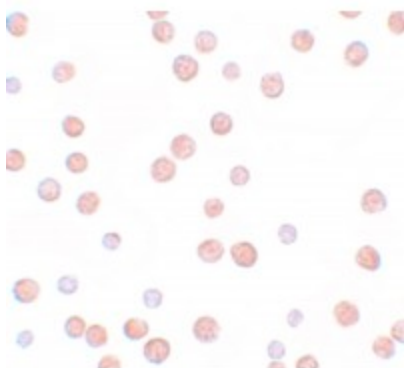
### Product images:



Western blot analysis of PLAC3 in HeLa cell lysate with PLAC3 antibody at 1 ug/mL in (A) the absence and (B) the presence of blocking peptide.



Immunofluorescence of PLAC3 in HeLa cells with PLAC3 antibody at 20 ug/mL.



Immunocytochemistry of PLAC3 in HeLa cells with PLAC3 antibody at 10 ug/mL.