

Product datasheet for **TA319994**

AFAP (AFAP1) Rabbit Polyclonal Antibody

Product data:

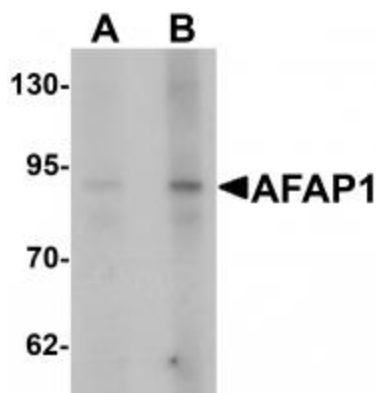
Product Type:	Primary Antibodies
Applications:	WB
Recommended Dilution:	WB: 1 - 2 ug/mL
Reactivity:	Human, Mouse
Host:	Rabbit
Isotype:	IgG
Clonality:	Polyclonal
Immunogen:	AFAP1 antibody was raised against an 18 amino acid synthetic peptide near the amino terminus of human AFAP1.
Formulation:	AFAP1 Antibody is supplied in PBS containing 0.02% sodium azide.
Concentration:	1ug/ul
Purification:	AFAP1 Antibody is affinity chromatography purified via peptide column.
Conjugation:	Unconjugated
Storage:	Store at -20°C as received.
Stability:	Stable for 12 months from date of receipt.
Gene Name:	actin filament associated protein 1
Database Link:	NP_940997 Entrez Gene 60312 Human Q8N556
Background:	AFAP1 Antibody: The actin filament-associated protein AFAP1 (AFAP-110) is an actin cross-linking protein first identified as a substrate of the viral oncogene v-Src. AFAP1 has a fundamental role in actin cytoskeleton arrangement. It contains a carboxyterminal actin-binding domain that directly binds to F-actin and serves as an adaptor protein in the regulation of SRC and PKC signal transduction by several functional domains, including 2 pleckstrin homology (PH) domains, a Src homology 3-binding (SH3-binding) motif, and several SH2-binding motifs. It is overexpressed in prostate carcinoma and contributes to tumor growth by regulating cell-matrix adhesions and migration in the cancer cells. AFAP1 represent a possible therapeutic target for controlling tumorigenesis and metastasis.



[View online »](#)

Synonyms: AFAP; AFAP-110; AFAP110

Product images:



Western blot analysis of AFAP1 in HeLa cell lysate with AFAP1 antibody at (A) 1 and (B) 2 ug/mL.