

Product datasheet for **TA319993**

WIZ Rabbit Polyclonal Antibody

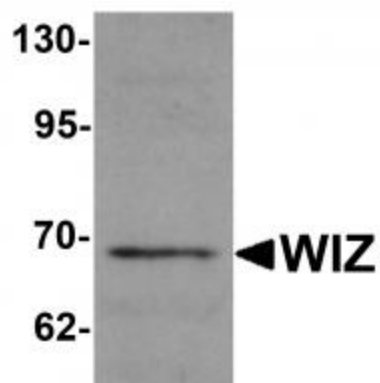
Product data:

| | |
|-----------------------|--|
| Product Type: | Primary Antibodies |
| Applications: | IF, IHC, WB |
| Recommended Dilution: | WB: 1 ug/mL, ICC: 2.5 ug/mL, IF: 20 ug/mL |
| Reactivity: | Human, Mouse, Rat |
| Host: | Rabbit |
| Isotype: | IgG |
| Clonality: | Polyclonal |
| Immunogen: | WIZ antibody was raised against a 17 amino acid synthetic peptide near the carboxy terminus of human TFF3. |
| Formulation: | WIZ Antibody is supplied in PBS containing 0.02% sodium azide. |
| Concentration: | 1ug/ul |
| Purification: | WIZ Antibody is affinity chromatography purified via peptide column. |
| Conjugation: | Unconjugated |
| Storage: | Store at -20°C as received. |
| Stability: | Stable for 12 months from date of receipt. |
| Gene Name: | widely interspaced zinc finger motifs |
| Database Link: | AAI44333 Entrez Gene 58525 Human O95785 |
| Background: | WIZ Antibody: WIZ, also known as ZNF803, was initially identified in a mouse cerebellum cDNA library screen and its message was found to be expressed in the granule cell layers of the cerebellum as well as in the dentate gyrus and olfactory bulb. Later analysis indicates however that WIZ is ubiquitously expressed. WIZ is a nuclear protein that co-localizes with G9a, a histone methyltransferase responsible for mono- and dimethylation of H3K9 at euchromatic regions. WIZ can also associate with CtBP family proteins, known to be transcriptional co-repressors, and has been suggested to link G9a/GLP complexes to the CtBP co-repressor machinery, possibly regulating complex stability and gene silencing. |
| Synonyms: | ZNF803 |

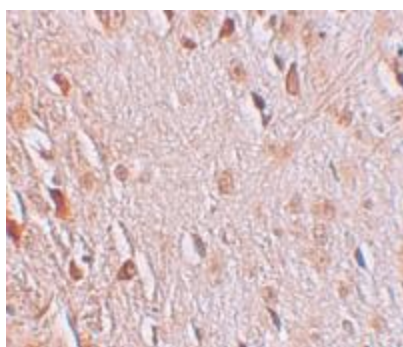


[View online »](#)

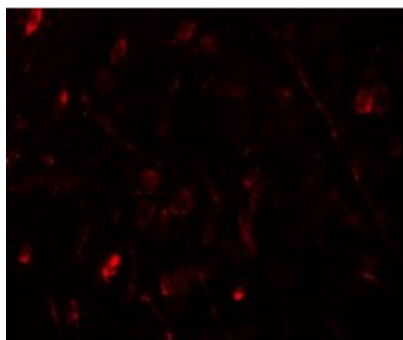
Product images:



Western blot analysis of WIZ in rat lung tissue lysate with WIZ antibody at 1 ug/mL.



Immunohistochemistry of WIZ in human brain tissue with WIZ antibody at 2.5 ug/mL.



Immunofluorescence of WIZ in human brain tissue with WIZ antibody at 20 ug/mL.