

Product datasheet for **TA319992**

SELK (SELENOK) Rabbit Polyclonal Antibody

Product data:

Product Type:	Primary Antibodies
Applications:	IF, WB
Recommended Dilution:	WB: 1 - 2 ug/mL, IF: 20 ug/mL
Reactivity:	Human, Mouse, Rat
Host:	Rabbit
Isotype:	IgG
Clonality:	Polyclonal
Immunogen:	SELK antibody was raised against an 18 amino acid synthetic peptide near the carboxy terminus of human SELK.
Formulation:	SELK Antibody is supplied in PBS containing 0.02% sodium azide.
Concentration:	1ug/ul
Purification:	SELK Antibody is affinity chromatography purified via peptide column.
Conjugation:	Unconjugated
Storage:	Store at -20°C as received.
Stability:	Stable for 12 months from date of receipt.
Predicted Protein Size:	10 kDa
Gene Name:	selenoprotein K
Database Link:	NP_067060 Entrez Gene 80795 Mouse Entrez Gene 290549 Rat Entrez Gene 58515 Human Q9Y6D0

Background: SELK Antibody: SELK is a selenoprotein, containing a selenocysteine residue at its active site. SELK is localized to the endoplasmic reticulum and is highly expressed in the heart, where it may function as an antioxidant. SELK can bind to proteins such as the ER-associated degradation (ERAD) components p97 ATPase, Derlin-1 and -2, and SelS as well as proteins in the oligosaccharyltransferase complex, suggesting that SELK may be involved in the Derlin-dependent ERAD of glycosylated misfolded proteins. SELK is also thought to be important in Ca²⁺ flux in immune cells, and is cleaved by m-calpain in resting macrophages. When these macrophages are activated through different Toll-like receptors, this cleavage is inhibited

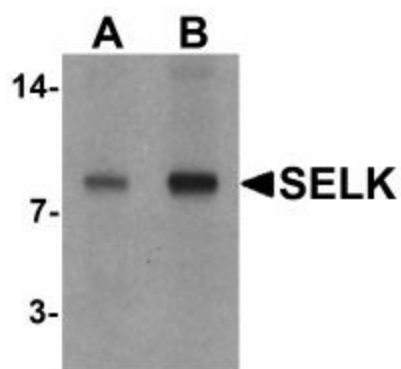


[View online »](#)

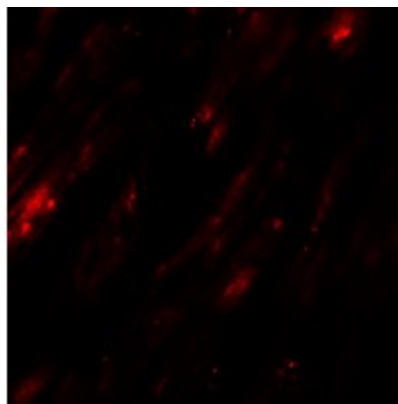
Synonyms: HSPC030; HSPC297

Protein Families: Transmembrane

Product images:



Western blot analysis of SELK in A20 cell lysate with SELK antibody at (A) 1 and (B) 2 ug/mL.



Immunofluorescence of SELK in human heart tissue with SELK antibody at 20 ug/mL.