

Product datasheet for **TA319991**

Zhangfei (CREBZF) Rabbit Polyclonal Antibody

Product data:

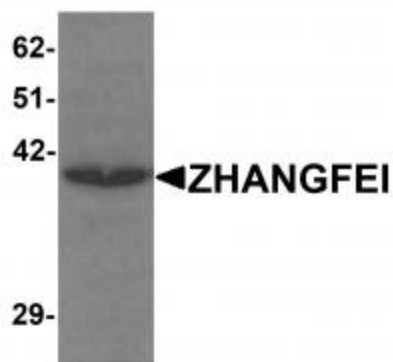
Product Type:	Primary Antibodies
Applications:	IF, WB
Recommended Dilution:	WB: 1 ug/mL, ICC: 10 ug/mL
Reactivity:	Human, Mouse
Host:	Rabbit
Isotype:	IgG
Clonality:	Polyclonal
Immunogen:	ZHANGFEI antibody was raised against a 18 amino acid synthetic peptide near the amino terminus of human ZHANGFEI.
Formulation:	ZHANGFEI Antibody is supplied in PBS containing 0.02% sodium azide.
Concentration:	1ug/ul
Purification:	ZHANGFEI Antibody is affinity chromatography purified via peptide column.
Conjugation:	Unconjugated
Storage:	Store at -20°C as received.
Stability:	Stable for 12 months from date of receipt.
Gene Name:	CREB/ATF bZIP transcription factor
Database Link:	NP_001034707 Entrez Gene 233490 Mouse Entrez Gene 58487 Human Q9NS37
Background:	ZHANGFEI Antibody: ZHANGFEI, also known as ZF, is a basic region-leucine zipper transcriptional factor that has been implicated in herpes virus infection cycle and related cellular processes. ZHANGFEI protein has a negatively charged active N-terminus, a leucine zipper of six heptad leucine repeats separated by a conserved six amino acid spacer, a basic domain and a bZIP region. ZHANGFEI strongly activates transcription and suppresses the expression of HSV proteins in cells infected with the virus in a HCFC1 dependent manner. It also suppresses the HCFC1 dependent transcriptional activation by CREB3 and reduces the amount of CREB3 in the cell.
Synonyms:	SMILE; ZF



[View online »](#)

Protein Families: Transcription Factors

Product images:



Western blot analysis of ZHANGFEI in K562 cell lysate with ZHANGFEI antibody at 1 ug/mL.



Immunocytochemistry of ZHANGFEI in K562 cells with ZHANGFEI antibody at 10 ug/mL.