

Product datasheet for **TA319990**

SCUBE2 Rabbit Polyclonal Antibody

Product data:

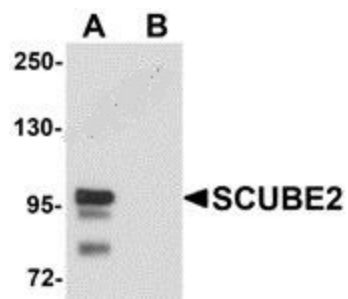
Product Type:	Primary Antibodies
Applications:	IF, WB
Recommended Dilution:	WB: 1 ug/mL, ICC: 20 ug/mL, IF: 20 ug/mL
Reactivity:	Human, Rat
Host:	Rabbit
Isotype:	IgG
Clonality:	Polyclonal
Immunogen:	SCUBE2 antibody was raised against a 17 amino acid synthetic peptide near the center of human SCUBE2.
Formulation:	SCUBE2 Antibody is supplied in PBS containing 0.02% sodium azide.
Concentration:	1ug/ul
Purification:	SCUBE2 Antibody is affinity chromatography purified via peptide column.
Conjugation:	Unconjugated
Storage:	Store at -20°C as received.
Stability:	Stable for 12 months from date of receipt.
Gene Name:	signal peptide, CUB domain and EGF like domain containing 2
Database Link:	NP_066025 Entrez Gene 499241 Rat Entrez Gene 57758 Human Q9NQ36
Background:	SCUBE2 Antibody: SCUBE2 is a member of a family of secreted glycoproteins that contain N-terminal EGF-like repeats and C-terminal cysteine-rich motifs and CUB domain and are expressed in embryonic neuroectoderm and vascular epithelium. SCUBE2 is a close homolog to SCUBE1 and can form a heterodimeric complex with SCUBE1. SCUBE2 is thought to participate in the Hedgehog signaling pathway by specifically interacting with Sonic Hedgehog (SHH) and the receptor PTCH1, enhancing the SHH signaling activity in the raft microdomains of the plasma membrane, and may thus play important roles in organ development and tumor progression.
Synonyms:	CEGB1; CEGF1; CEGP1



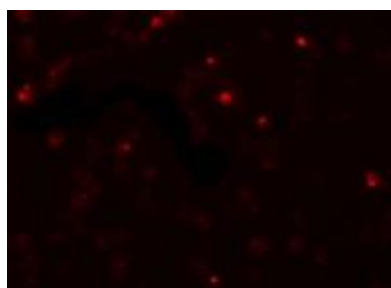
[View online »](#)

Protein Families: Transmembrane

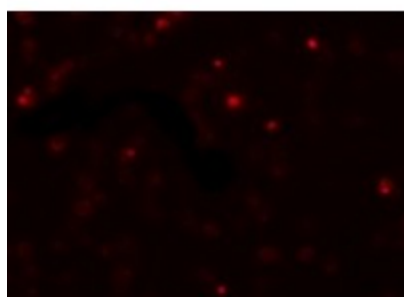
Product images:



Western blot analysis of SCUBE2 in Daudi cell lysate with SCUBE2 antibody at 1 ug/mL in (A) the absence and (B) the presence of blocking peptide.



Immunocytochemistry of SCUBE2 in Daudi cells with SCUBE2 antibody at 20 ug/mL.



Immunofluorescence of SCUBE2 in Daudi cells with SCUBE2 antibody at 20 ug/mL.