

Product datasheet for **TA319988**

Shroom 3 (SHROOM3) Rabbit Polyclonal Antibody

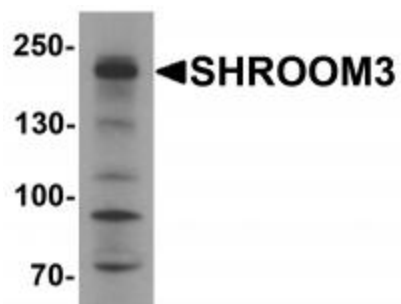
Product data:

Product Type:	Primary Antibodies
Applications:	WB
Recommended Dilution:	WB: 1 - 2 ug/mL
Reactivity:	Human
Host:	Rabbit
Isotype:	IgG
Clonality:	Polyclonal
Immunogen:	Rabbit polyclonal SHROOM3 antibody was raised against an 18 amino acid peptide near the center of human SHROOM3.
Formulation:	SHROOM3 Antibody is supplied in PBS containing 0.02% sodium azide.
Concentration:	1ug/ul
Purification:	SHROOM3 Antibody is affinity chromatography purified via peptide column.
Conjugation:	Unconjugated
Storage:	Store at -20°C as received.
Stability:	Stable for 12 months from date of receipt.
Predicted Protein Size:	220 kDa
Gene Name:	shroom family member 3
Database Link:	NP_065910 Entrez Gene 57619 Human Q8TF72
Background:	SHROOM3 Antibody: SHROOM family members play diverse roles in the development of the nervous system and other tissues. SHROOM3 is an actin-binding protein is a regulator of the microtubule cytoskeleton during epithelial morphogenesis and is sufficient and necessary to induce a redistribution of the microtubule regulator gamma-tubulin. It is necessary for both apiscobasal cell elongation and apical constriction in the neural epithelium. SHROOM3 has also been shown to be essential for cell shape changes and morphogenesis in the developing vertebrate gut, with its transcription relying on the Pitx1 transcription factor.
Synonyms:	APXL3; MSTP013; SHRM; ShrmL



[View online »](#)

Product images:



Western blot analysis of SHROOM3 in SK-N-SH cell lysate with SHROOM3 antibody at 1 ug/mL.