

Product datasheet for **TA319986**

SLAIN2 Rabbit Polyclonal Antibody

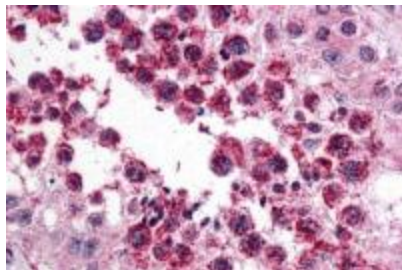
Product data:

Product Type:	Primary Antibodies
Applications:	IHC
Recommended Dilution:	IHC: 5 ug/mL
Reactivity:	Human
Host:	Rabbit
Isotype:	IgG
Clonality:	Polyclonal
Immunogen:	SLAIN2 antibody was raised against a 14 amino acid synthetic peptide near the amino terminus of human SLAIN2.
Formulation:	SLAIN2 Antibody is supplied in PBS containing 0.02% sodium azide.
Concentration:	1ug/ul
Purification:	SLAIN2 Antibody is affinity chromatography purified via peptide column.
Conjugation:	Unconjugated
Storage:	Store at -20°C as received.
Stability:	Stable for 12 months from date of receipt.
Predicted Protein Size:	64 kDa
Gene Name:	SLAIN motif family member 2
Database Link:	AAH40993 Entrez Gene 57606 Human Q9P270
Background:	SLAIN2 Antibody: SLAIN2 is closely related to SLAIN1, a novel stem cell protein that is expressed at the stem cell and epiblast stages. Unlike SLAIN1, SLAIN2 is widely expressed and is thought to play a role in regulating microtubule (MT) growth and organization. SLAIN2 binds to end-binding proteins (EBs), cytoplasmic linker proteins (CLIPs) such as CLIP170, CLIP-associated proteins, and interacts with the MT polymerase ch-TOG. Depletion of SLAIN2 using RNAi led to disorganization of the radial MT array, indicating its importance in the regulation of MT growth and organization.
Synonyms:	KIAA1458



[View online »](#)

Product images:



Immunohistochemistry of SLAIN2 in human testis with SLAIN2 antibody at 5 ug/mL.