

Product datasheet for **TA319985**

ZNF687 Rabbit Polyclonal Antibody

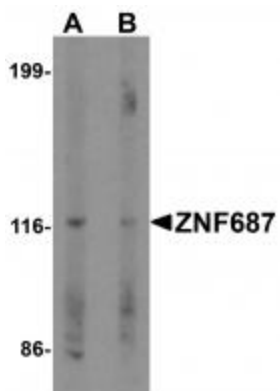
Product data:

Product Type:	Primary Antibodies
Applications:	IF, WB
Recommended Dilution:	WB: 0.5 ug/mL, IF: 20 ug/mL
Reactivity:	Human
Host:	Rabbit
Isotype:	IgG
Clonality:	Polyclonal
Immunogen:	ZNF687 antibody was raised against a 17 amino acid synthetic peptide near the carboxy terminus of human ZNF687.
Formulation:	ZNF687 Antibody is supplied in PBS containing 0.02% sodium azide.
Concentration:	1ug/ul
Purification:	ZNF687 Antibody is affinity chromatography purified via peptide column.
Conjugation:	Unconjugated
Storage:	Store at -20°C as received.
Stability:	Stable for 12 months from date of receipt.
Gene Name:	zinc finger protein 687
Database Link:	NP_065883 Entrez Gene 57592 Human Q8N1G0
Background:	ZNF687 Antibody: The zinc finger protein 687 (ZNF687) was initially identified as a translocation partner gene with RUNX1 in patients with acute myeloid leukemia (AML). Little is known of the function of the ZNF687 protein, but it has been shown to weakly interact with the Ring1/Rnf2 RING finger protein member of the Polycomb group of proteins, suggesting it may be involved in the chromatin-modifying complexes essential for embryonic development and stem cell renewal. Other evidence suggests that ZNF687 may be part of a transcriptional network that also includes ZNF592 and ZMYMD8.
Synonyms:	PDB6

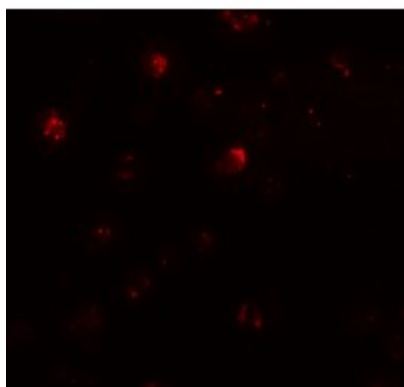


[View online »](#)

Product images:



Western blot analysis of ZNF687 in Jurkat cell lysate with ZNF687 antibody at 0.5 ug/ml in (A) the absence and (B) the presence of blocking peptide.



Immunofluorescence of ZNF687 in Jurkat cells with ZNF687 antibody at 20 ug/mL.