

## Product datasheet for **TA319981**

### PTCHD2 (DISP3) Rabbit Polyclonal Antibody

#### Product data:

Product Type:	Primary Antibodies
Applications:	IF, IHC, WB
Recommended Dilution:	WB: 1 - 2 ug/mL, ICC: 2.5 ug/mL, IF: 20 ug/mL
Reactivity:	Human, Mouse, Rat
Host:	Rabbit
Isotype:	IgG
Clonality:	Polyclonal
Immunogen:	PTCHD2 antibody was raised against a 19 amino acid synthetic peptide from near the center of human PTCHD2.
Formulation:	PTCHD2 Antibody is supplied in PBS containing 0.02% sodium azide.
Concentration:	1ug/ul
Purification:	PTCHD2 Antibody is affinity chromatography purified via peptide column.
Conjugation:	Unconjugated
Storage:	Store at -20°C as received.
Stability:	Stable for 12 months from date of receipt.
Gene Name:	dispatched RND transporter family member 3
Database Link:	<a href="#">NP_065831</a>

[Entrez Gene 242748 Mouse](#)[Entrez Gene 313705 Rat](#)[Entrez Gene 57540 Human](#)  
[Q9P2K9](#)

**Background:** PTCHD2 Antibody: PTCHD2, also known as DISP3, is the third of three known homologs of the *D. melanogaster* protein Dispatched. It is a multi-transmembrane protein containing two PTCH/DISP domains and is thought to be involved in the release of lipid-anchored secreted proteins. Like DISP1 and DISP2, DISP3 has been implicated in signaling pathways during embryogenesis, tissue regeneration, and carcinogenesis. It is highly expressed in Purkinje cells, hippocampal neurons, and retinal ganglion cells. Recently, it has been shown that PTCHD2 localizes within the endoplasmic reticulum and colocalizes with cholesterol, and given that its expression is regulated by thyroid hormone (T3), it has been suggested that DISP3 may be a link between thyroid hormone and cholesterol metabolism.

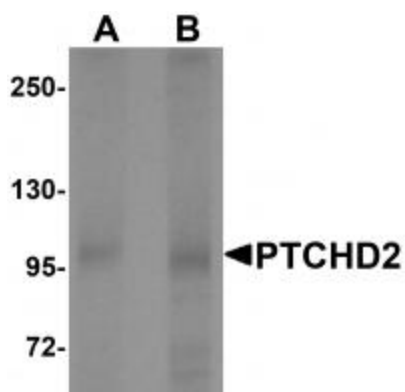


[View online »](#)

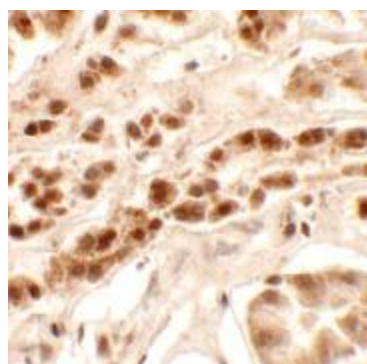
Synonyms: PTCHD2

Protein Families: Transmembrane

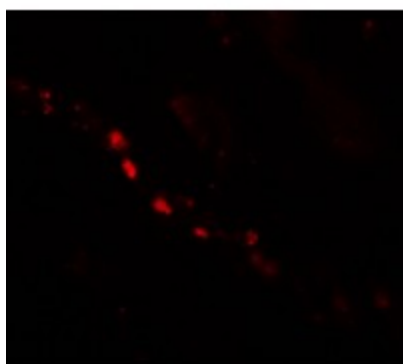
### Product images:



Western blot analysis of PTCHD2 in mouse kidney tissue lysate with PTCHD2 antibody at (A) 1 and (B) 2 ug/mL.



Immunohistochemistry of PTCHD2 in human kidney tissue with PTCHD2 antibody at 2.5 ug/mL.



Immunofluorescence of PTCHD2 in human kidney tissue with PTCHD2 antibody at 20 ug/mL.