

Product datasheet for **TA319980**

WDR35 Rabbit Polyclonal Antibody

Product data:

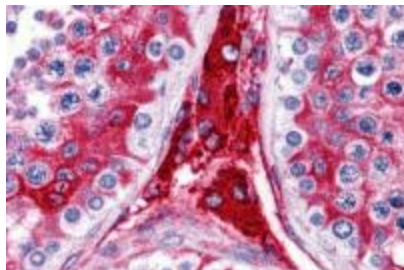
Product Type:	Primary Antibodies
Applications:	IHC
Recommended Dilution:	IHC: 5 ug/mL
Reactivity:	Human
Host:	Rabbit
Isotype:	IgG
Clonality:	Polyclonal
Immunogen:	WDR35 antibody was raised against a 16 amino acid synthetic peptide near the amino terminus of human WDR35.
Formulation:	WDR35 Antibody is supplied in PBS containing 0.02% sodium azide.
Concentration:	1ug/ul
Purification:	WDR35 Antibody is affinity chromatography purified via peptide column.
Conjugation:	Unconjugated
Storage:	Store at -20°C as received.
Stability:	Stable for 12 months from date of receipt.
Gene Name:	WD repeat domain 35
Database Link:	NP_001006658 Entrez Gene 57539 Human Q9P2L0
Background:	WDR35 Antibody: WD40 repeats are a common structural module in eukaryotic proteins, and proteins containing WD40 domains have a wide range of functions, including signal transduction, cell cycle regulation, RNA splicing, and transcription. One such protein, WDR35, also known as CED2, has been shown to be mutated in patients with Sensenbrenner syndrome/cranioectodermal dysplasia (CED), an autosomal-recessive disease that is characterized by craniosynostosis and ectodermal and skeletal abnormalities. WDR35 localizes to cilia and centrosomes during embryogenesis and human and mouse fibroblasts that lack this gene fail to produce cilia. Mutations in this gene can also cause short-rib polydactyly syndromes due to abnormal ciliogenesis.



[View online »](#)

Synonyms: CED2; IFT121; IFTA1; SRTD7

Product images:



Immunohistochemistry of WDR35 in human testis tissue with WDR35 antibody at 5 ug/mL.