

Product datasheet for **TA319979**

CASKIN1 Rabbit Polyclonal Antibody

Product data:

Product Type:	Primary Antibodies
Applications:	WB
Recommended Dilution:	WB: 1 ug/mL
Reactivity:	Human
Host:	Rabbit
Isotype:	IgG
Clonality:	Polyclonal
Immunogen:	CASKIN1 antibody was raised against a 17 amino acid synthetic peptide near the center of human CASKIN1.
Formulation:	CASKIN1 Antibody is supplied in PBS containing 0.02% sodium azide.
Concentration:	1ug/ul
Purification:	CASKIN1 Antibody is affinity chromatography purified via peptide column.
Conjugation:	Unconjugated
Storage:	Store at -20°C as received.
Stability:	Stable for 12 months from date of receipt.
Predicted Protein Size:	157 kDa
Gene Name:	CASK interacting protein 1
Database Link:	NP_065815 Entrez Gene 57524 Human Q8WXD9



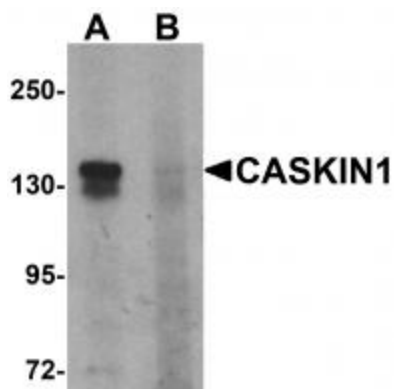
[View online »](#)

Background:

CASKIN1 Antibody: Calcium/calmodulin-dependent serine protein kinase (CASK) is a conserved multi-domain scaffolding protein involved in brain development, synapse formation, and establishment of cell polarity. CASKINs (CASK interacting proteins) interact with CASK and is thought to play a role in CASK function, specifically by coupling CASK to distinct downstream effectors. CASKIN1 is a multidomain protein containing six N-terminal ankyrin repeats, one SH3 domain, and two sterile alpha motif domains followed by a long proline-rich sequence and a short conserved C-terminal domain. CASKIN1 coassembles with CASK on the cytoplasmic tail of neuexin 1, suggesting that CASKIN and CASK coat the cytoplasmic tails of neuexins and other cell-surface proteins.

Synonyms:

ANKS5A

Product images:

Western blot analysis of CASKIN1 in HeLa cell lysate with CASKIN1 antibody at 1 ug/ml in (A) the absence and (B) the presence of blocking peptide.