

Product datasheet for **TA319976**

CASKIN2 Rabbit Polyclonal Antibody

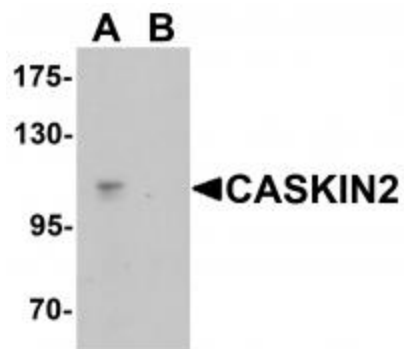
Product data:

Product Type:	Primary Antibodies
Applications:	IF, WB
Recommended Dilution:	WB: 1 ug/mL, IF: 5 ug/mL
Reactivity:	Human
Host:	Rabbit
Isotype:	IgG
Clonality:	Polyclonal
Immunogen:	CASKIN2 antibody was raised against a 19 amino acid synthetic peptide near the amino terminus of human CASKIN2.
Formulation:	CASKIN2 Antibody is supplied in PBS containing 0.02% sodium azide.
Concentration:	1ug/ul
Purification:	CASKIN2 Antibody is affinity chromatography purified via peptide column.
Conjugation:	Unconjugated
Storage:	Store at -20°C as received.
Stability:	Stable for 12 months from date of receipt.
Gene Name:	CASK interacting protein 2
Database Link:	NP_065804 Entrez Gene 57513 Human Q8WXEQ
Background:	CASKIN2 Antibody: Calcium/calmodulin-dependent serine protein kinase (CASK) is a conserved multi-domain scaffolding protein involved in brain development, synapse formation, and establishment of cell polarity. CASKINs (CASK interacting protein) interact with CASK and is thought to play a role in CASK function, specifically by coupling CASK to distinct downstream effectors. CASKIN2 is a multidomain protein containing six N-terminal ankyrin repeats, one SH3 domain, and two sterile alpha motif domains followed by a long proline-rich sequence and a short conserved C-terminal domain. It is expressed ubiquitously with highest levels present in fetal and adult liver tissue.
Synonyms:	ANKS5B

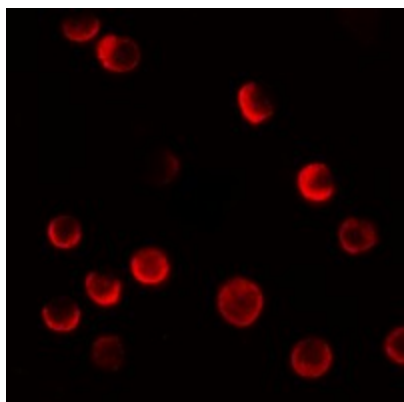


[View online »](#)

Product images:



Western blot analysis of CASKIN2 in HeLa cell lysate with CASKIN2 antibody at 1 ug/mL in (A) the absence and (B) the presence of blocking peptide.



Immunofluorescence of CASKIN2 in HeLa cells with CASKIN2 antibody at 20 ug/mL.



Immunocytochemistry of CASKIN2 in HeLa cells with CASKIN2 antibody at 2.5 ug/mL.