

Product datasheet for **TA319975**

HHATL Rabbit Polyclonal Antibody

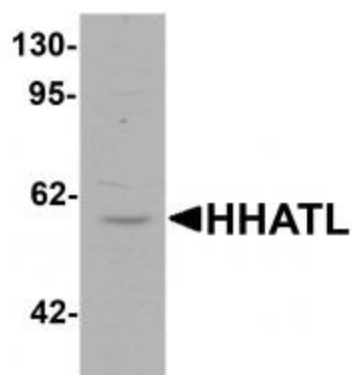
Product data:

Product Type:	Primary Antibodies
Applications:	IF, IHC, WB
Recommended Dilution:	WB: 1 ug/mL, ICC: 2.5 ug/mL
Reactivity:	Human, Mouse, Rat
Host:	Rabbit
Isotype:	IgG
Clonality:	Polyclonal
Immunogen:	HHATL antibody was raised against a 19 amino acid synthetic peptide near the amino terminus of human HHATL.
Formulation:	HHATL Antibody is supplied in PBS containing 0.02% sodium azide.
Concentration:	1ug/ul
Purification:	HHATL Antibody is affinity chromatography purified via peptide column.
Conjugation:	Unconjugated
Storage:	Store at -20°C as received.
Stability:	Stable for 12 months from date of receipt.
Gene Name:	hedgehog acyltransferase-like
Database Link:	NP_065758 Entrez Gene 74770 Mouse Entrez Gene 301073 Rat Entrez Gene 57467 Human Q9HCP6
Background:	HHATL Antibody: The Protein-cysteine N-palmitoyltransferase HHAT-like protein (HHATL), also known as the mammalian glycerol uptake/transporter 1 (Gup1) is a homolog of the <i>S. cerevisiae</i> Gup1. It is an endoplasmic reticulum (ER) membrane protein that co-localizes with the mammalian hedgehog acyltransferase Skn and interferes with its N-terminal palmitoylation of Sonic hedgehog (SHH), suggesting that HHATL acts as a negative regulator for N-terminal palmitoylation of SHH. HHATL is highly expressed in normal skin, but becomes down-regulated in skin squamous cell carcinoma, suggesting it may play a role in its development.
Synonyms:	C3orf3; GUP1; MBOAT3; MSTP002; OACT3
Protein Families:	Transmembrane

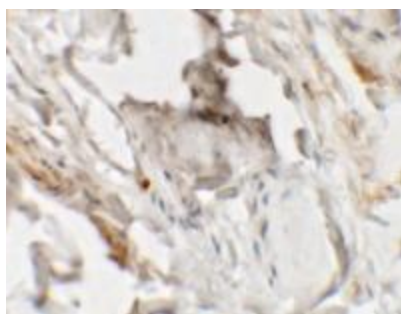


[View online »](#)

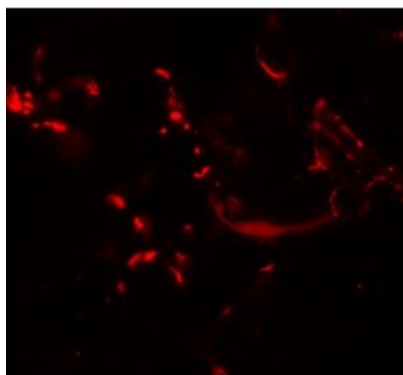
Product images:



Western blot analysis of HHATL in 3T3 cell lysate with HHATL antibody at 1 ug/mL.



Immunohistochemistry of HHATL in human skin tissue with HHATL antibody at 2.5 ug/mL.



Immunofluorescence of HHATL in human skin tissue with HHATL antibody at 20 ug/mL.