

Product datasheet for **TA319973**

TTYH1 Rabbit Polyclonal Antibody

Product data:

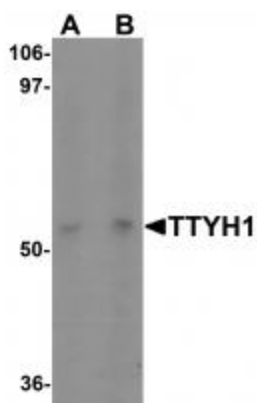
Product Type:	Primary Antibodies
Applications:	IF, WB
Recommended Dilution:	WB: 1 - 2 ug/mL, ICC: 5 ug/mL
Reactivity:	Human
Host:	Rabbit
Isotype:	IgG
Clonality:	Polyclonal
Immunogen:	TTYH1 antibody was raised against a 17 amino acid synthetic peptide near the carboxy terminus of human TTYH1.
Formulation:	TTYH1 Antibody is supplied in PBS containing 0.02% sodium azide.
Concentration:	1ug/ul
Purification:	TTYH1 Antibody is affinity chromatography purified via peptide column.
Conjugation:	Unconjugated
Storage:	Store at -20°C as received.
Stability:	Stable for 12 months from date of receipt.
Gene Name:	tweety family member 1
Database Link:	NP_001005367 Entrez Gene 57348 Human Q9H313
Background:	TTYH1 Antibody: TTYH1 is a member of the tweety family of proteins, a family of chloride anion channels containing five transmembrane regions. TTYH1 is a Ca ²⁺ -independent, volume-sensitive large conductance chloride (Cl ⁻) channel. TTYH1 is primarily expressed in neural tissue and upregulated in astrocytoma, glioma, and several other cancers. Recent experiments have shown that TTYH1 is an integral endoplasmic reticulum (ER) membrane protein involved in cell proliferation and is thought to play an essential role in embryonic cell growth, possibly through the Ca ²⁺ storage/release process in ER membranes during early development.



[View online »](#)

Synonyms: 4930459B04Rik; 6330408P11Rik; OTTMUSP00000024583; tty; tweety 1; tweety homolog 1 (Drosophila)

Product images:



Western blot analysis of TTYH1 in Raji cell lysate with TTYH1 antibody at (A) 1 and (B) 2 ug/mL.



Immunocytochemistry of TTYH1 in Raji cells with TTYH1 antibody at 5 ug/mL.