

Product datasheet for **TA319971**

STOX2 Rabbit Polyclonal Antibody

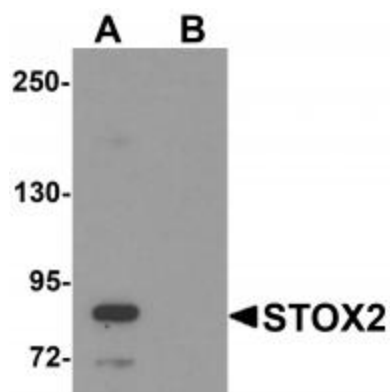
Product data:

Product Type:	Primary Antibodies
Applications:	IF, IHC, WB
Recommended Dilution:	WB: 1 ug/mL, ICC: 2.5 ug/mL, IF: 20 ug/mL
Reactivity:	Human, Mouse, Rat
Host:	Rabbit
Isotype:	IgG
Clonality:	Polyclonal
Immunogen:	STOX2 antibody was raised against a 19 amino acid synthetic peptide near the carboxy terminus of human STOX2.
Formulation:	STOX2 Antibody is supplied in PBS containing 0.02% sodium azide.
Concentration:	1ug/ul
Purification:	STOX2 Antibody is affinity chromatography purified via peptide column.
Conjugation:	Unconjugated
Storage:	Store at -20°C as received.
Stability:	Stable for 12 months from date of receipt.
Gene Name:	storkhead box 2
Database Link:	NP_064610 Entrez Gene 71069 Mouse Entrez Gene 306459 Rat Entrez Gene 56977 Human Q9P2F5
Background:	STOX2 Antibody: The Storkhead box protein 2 (STOX2) is the only known paralog to STOX1, a winged-helix domain containing transcription factor believed to play a role in the differentiation of stem cells. STOX2 has been suggested to be part of a molecular profile unique to stem cells, and its mRNA may be part of a transcriptional profile observed with increased inflammatory response to air pollutants. Decreased STOX2 expression levels in decidua are also correlated with preeclampsia, suggesting STOX2 may play a role in the pathophysiology of preeclampsia.
Synonyms:	DKFZp762K222

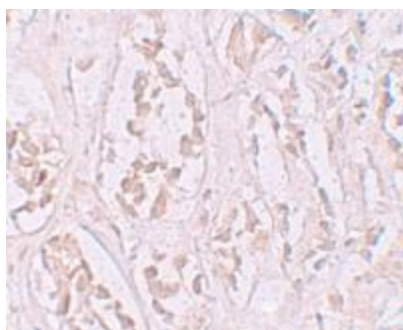


[View online »](#)

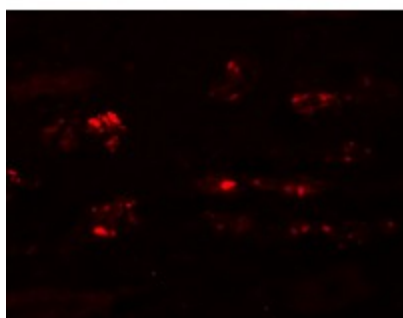
Product images:



Western blot analysis of STOX2 in human kidney tissue lysate with STOX2 antibody at 1 ug/mL in (A) the absence and (B) the presence of blocking peptide.



Immunohistochemistry of STOX2 in human kidney tissue with STOX2 antibody at 2.5 ug/mL.



Immunofluorescence of STOX2 in human kidney tissue with STOX2 antibody at 20 ug/mL.