

Product datasheet for **TA319970**

NCLN Rabbit Polyclonal Antibody

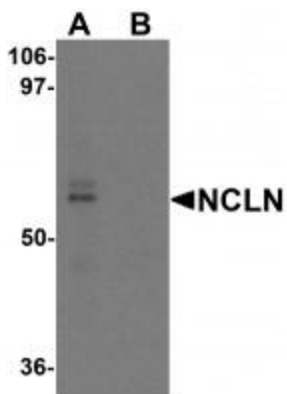
Product data:

Product Type:	Primary Antibodies
Applications:	IF, IHC, WB
Recommended Dilution:	WB: 0.5 ug/mL, ICC: 2.5 ug/mL
Reactivity:	Human, Mouse, Rat
Host:	Rabbit
Isotype:	IgG
Clonality:	Polyclonal
Immunogen:	NCLN antibody was raised against an 18 amino acid synthetic peptide near the carboxy terminus of human NCLN.
Formulation:	NCLN Antibody is supplied in PBS containing 0.02% sodium azide.
Concentration:	1 mg/ml
Purification:	NCLN Antibody is affinity chromatography purified via peptide column.
Conjugation:	Unconjugated
Storage:	Store at -20°C as received.
Stability:	Stable for 12 months from date of receipt.
Gene Name:	nicalin
Database Link:	NP_064555 Entrez Gene 103425 Mouse Entrez Gene 314648 Rat Entrez Gene 56926 Human Q969V3
Background:	NCLN Antibody: Nicalin, along with its binding partner Nomo, is a novel signaling antagonist to Nodals, signaling factors of the TGF- β superfamily that play a key role in vertebrate development. Nicalin is distantly related to Nicastrin, a component of the Alzheimer's disease-associated gamma-secretase, and is thought to have a similar function. Another protein, TMEM147, has also been recently identified as associating with Nicalin and NOMO as part of the gamma-secretase-like complex.
Synonyms:	NET59
Protein Families:	Transmembrane

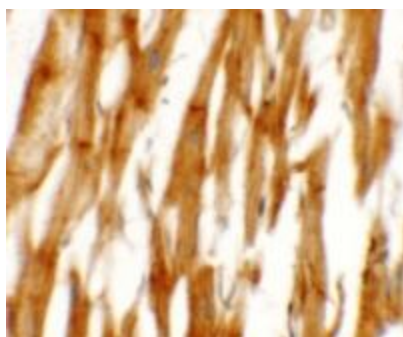


[View online »](#)

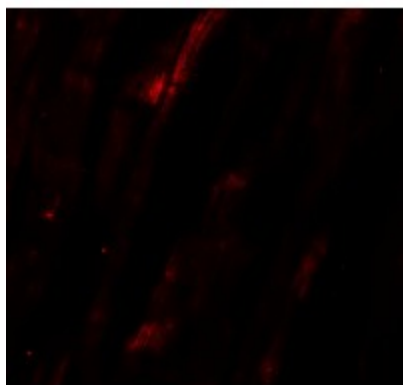
Product images:



Western blot analysis of NCLN in mouse heart tissue lysate with NCLN antibody at 0.5 ug/mL in (A) the absence and (B) the presence of blocking peptide.



Immunohistochemistry of NCLN in human heart tissue with NCLN antibody at 2.5 ug/mL.



Immunofluorescence of NCLN in human heart tissue with NCLN antibody at 20 ug/mL.