

Product datasheet for **TA319966**

CTNNBL1 Rabbit Polyclonal Antibody

Product data:

Product Type:	Primary Antibodies
Applications:	IF, IHC, WB
Recommended Dilution:	WB: 1 - 2 ug/mL, ICC: 5 ug/mL, IF: 20 ug/mL
Reactivity:	Human, Mouse, Rat
Host:	Rabbit
Isotype:	IgG
Clonality:	Polyclonal
Immunogen:	CTNNBL1 antibody was raised against a 20 amino acid synthetic peptide near the carboxy terminus of human CTNNBL1.
Formulation:	CTNNBL1 Antibody is supplied in PBS containing 0.02% sodium azide.
Concentration:	1ug/ul
Purification:	CTNNBL1 Antibody is affinity chromatography purified via peptide column.
Conjugation:	Unconjugated
Storage:	Store at -20°C as received.
Stability:	Stable for 12 months from date of receipt.
Gene Name:	catenin beta like 1
Database Link:	NP_110517 Entrez Gene 66642 Mouse Entrez Gene 296320 Rat Entrez Gene 56259 Human Q8WYA6
Background:	CTNNBL1 Antibody: The Beta-catenin-like protein 1 (CTNNBL1) contains an acidic domain, a putative bipartite nuclear localization signal, a nuclear export signal, a leucine-isoleucine zipper, and phosphorylation motifs, as well as Armadillo/beta-catenin-like repeats. Transient expression of CTNNBL1 resulted in translocation to the nucleus and apoptosis, suggesting it may be involved in the apoptotic pathway. CTNNBL1 interacts with the Prp19 complex of the spliceosome and the Ig class switching enzyme activation-induced deaminase (AID) and had been suggested to play a role in antibody-diversification and class switching, but recent studies have shown CTNNBL1 to be dispensable for Ig class switch recombination. Other studies have identified CTNNBL1 as a novel gene for obesity.

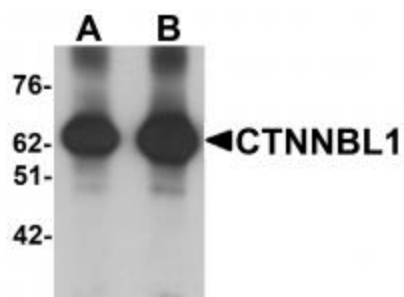


[View online »](#)

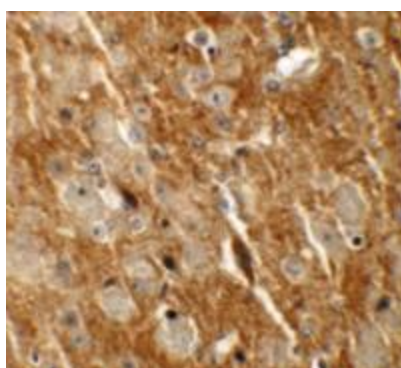
Synonyms: C20orf33; dj633O20.1; NAP; P14L; PP8304

Protein Pathways: Spliceosome

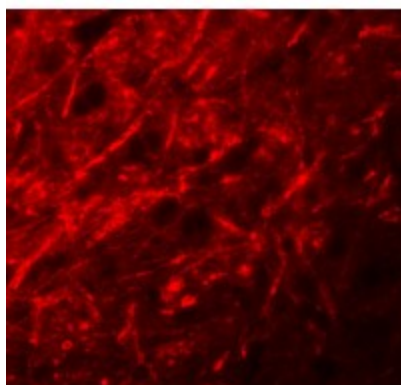
Product images:



Western blot analysis of CTNNBL1 in human brain tissue lysate with CTNNBL1 antibody at (A) 1 and (B) 2 ug/mL.



Immunohistochemistry of CTNNBL1 in mouse brain tissue with CTNNBL1 antibody at 5 ug/mL.



Immunofluorescence of CTNNBL1 in mouse brain tissue with CTNNBL1 antibody at 20 ug/mL.