

Product datasheet for **TA319965**

RNF20 Rabbit Polyclonal Antibody

Product data:

Product Type:	Primary Antibodies
Applications:	IF, IHC, WB
Recommended Dilution:	WB: 1 - 2 ug/mL
Reactivity:	Human, Mouse
Host:	Rabbit
Isotype:	IgG
Clonality:	Polyclonal
Immunogen:	RNF20 antibody was raised against a 19 amino acid peptide near the amino terminus of human RNF20.
Formulation:	RNF20 Antibody is supplied in PBS containing 0.02% sodium azide.
Concentration:	1ug/ul
Purification:	RNF20 Antibody is affinity chromatography purified via peptide column.
Conjugation:	Unconjugated
Storage:	Store at -20°C as received.
Stability:	Stable for 12 months from date of receipt.
Predicted Protein Size:	Predicted: 99, 107 kDa; Observed: 100, 110 kDa
Gene Name:	ring finger protein 20
Database Link:	NP_062538 Entrez Gene 109331 MouseEntrez Gene 56254 Human Q5VTR2
Background:	RNF20 Antibody: RNF20 is an E3 ubiquitin ligase that regulates chromosome structure by monoubiquitinating histone H2B. RNF20 selectively suppresses the expression of some genes such as several protooncogenes and growth-related genes, including many genes that are induced by epidermal growth factor by interfering with chromatin recruitment of transcription elongation factor SII (TFIIS). In contrast, RNF20 also positively regulates the p53 tumor suppressor as well as numerous histone H2A and H2B genes. Together with the deubiquitinase USP44, RNF20 regulates stem cell differentiation by modulating H2B monoubiquitination.

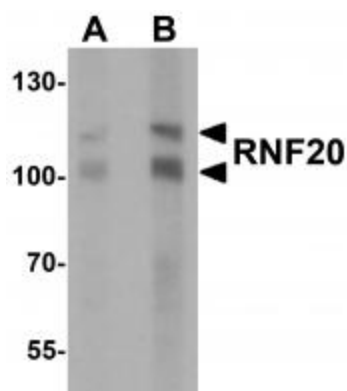


[View online »](#)

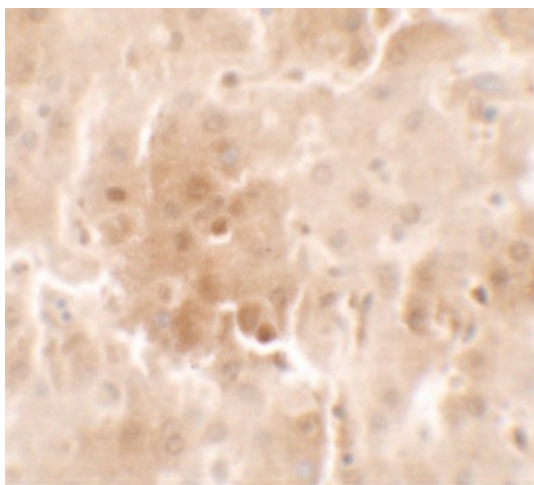
Synonyms: BRE1; BRE1A; hBRE1

Protein Families: Druggable Genome

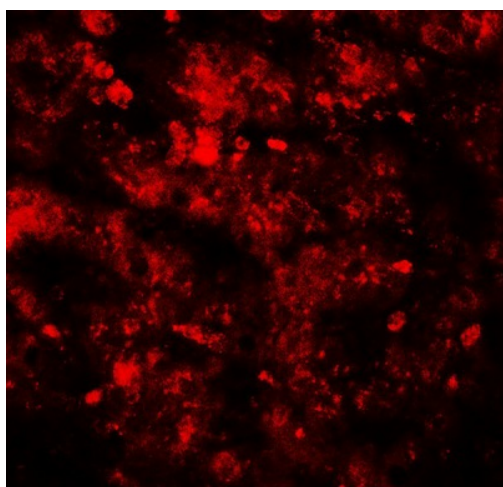
Product images:



Western blot analysis of RNF20 in human liver tissue lysate with RNF20 antibody at (A) 1 and (B) 2 ug/mL.



Immunohistochemistry of RNF20 in human liver tissue with RNF20 antibody at 2.5 ug/mL.



Immunofluorescence of RNF20 in human liver tissue with RNF20 antibody at 20 ug/mL.