

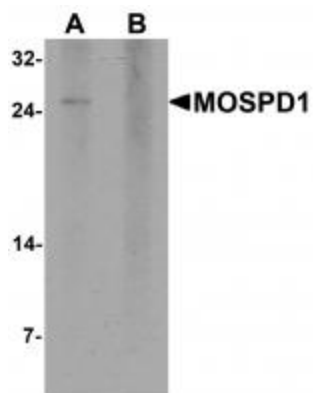
Product datasheet for **TA319964**

MOSPD1 Rabbit Polyclonal Antibody

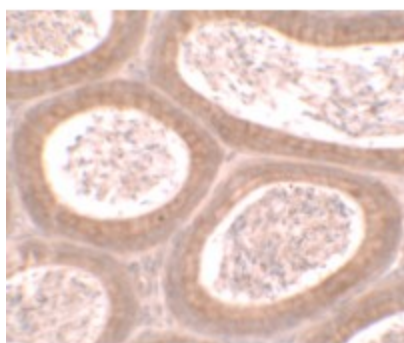
Product data:

Product Type:	Primary Antibodies
Applications:	IF, IHC, WB
Recommended Dilution:	WB: 1 ug/mL
Reactivity:	Human, Mouse, Rat
Host:	Rabbit
Isotype:	IgG
Clonality:	Polyclonal
Immunogen:	MOSPD1 antibody was raised against a 19 amino acid peptide near the center of human MOSPD1 .
Formulation:	MOSPD1 Antibody is supplied in PBS containing 0.02% sodium azide.
Concentration:	1ug/ul
Purification:	MOSPD1 Antibody is affinity chromatography purified via peptide column.
Conjugation:	Unconjugated
Storage:	Store at -20°C as received.
Stability:	Stable for 12 months from date of receipt.
Predicted Protein Size:	Predicted: 23 kDa; Observed: 25 kDa
Gene Name:	motile sperm domain containing 1
Database Link:	NP_062456 Entrez Gene 70380 Mouse Entrez Gene 317312 Rat Entrez Gene 56180 Human Q9UJG1
Background:	MOSPD1 Antibody: The Motile sperm domain-containing protein 1 (MOSPD1) is part of a family of proteins defined by the presence of a major sperm protein (MSP) domain and two transmembrane domains. MOSPD1 codes for a small protein that localizes to the endoplasmic reticulum (ER) and the Golgi apparatus and has been suggested to play a role in the developmental regulation at the switch between mesenchymal and epithelial cells.
Synonyms:	DJ473B4
Protein Families:	Transmembrane

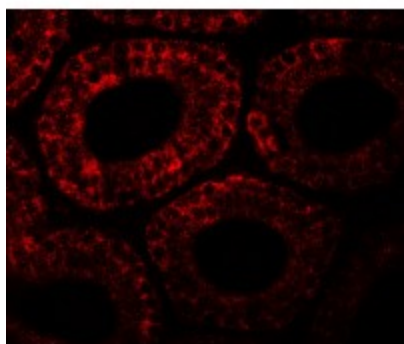

[View online »](#)

Product images:


Western blot analysis of MOSPD1 in human brain tissue lysate with MOSPD1 antibody at 1 ug/mL in (A) the absence and (B) the presence of blocking peptide.



Immunohistochemistry of MOSPD1 in mouse testis tissue with MOSPD1 antibody at 2.5 ug/mL.



Immunofluorescence of MOSPD1 in mouse testis tissue with MOSPD1 antibody at 20 ug/mL.