

## Product datasheet for **TA319963**

### LMBRD1 Rabbit Polyclonal Antibody

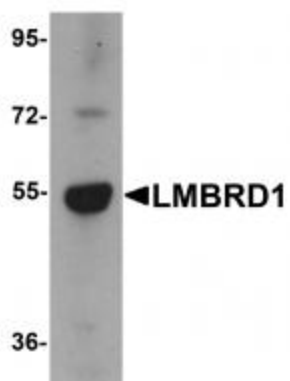
#### Product data:

Product Type:	Primary Antibodies
Applications:	IF, IHC, WB
Recommended Dilution:	WB: 1 ug/mL, ICC: 2.5 ug/mL, IF: 20 ug/mL
Reactivity:	Human, Mouse, Rat
Host:	Rabbit
Isotype:	IgG
Clonality:	Polyclonal
Immunogen:	LMBRD1 antibody was raised against an 18 amino acid synthetic peptide near the carboxy terminus of human LMBRD1.
Formulation:	LMBRD1 Antibody is supplied in PBS containing 0.02% sodium azide.
Concentration:	1ug/ul
Purification:	LMBRD1 Antibody is affinity chromatography purified via peptide column.
Conjugation:	Unconjugated
Storage:	Store at -20°C as received.
Stability:	Stable for 12 months from date of receipt.
Gene Name:	LMBR1 domain containing 1
Database Link:	<a href="#">NP_060838</a> <a href="#">Entrez Gene 68421 Mouse</a> <a href="#">Entrez Gene 246046 Rat</a> <a href="#">Entrez Gene 55788 Human</a> <a href="#">Q9NUN5</a>
Background:	LMBRD1 Antibody: LMBRD1, also known as NESI (nuclear export signal-interacting protein, is a lysosomal membrane protein that is thought be involved in the transport and metabolism of cobalamin. LMBRD1 was initially identified as interacting with the large form of the hepatitis delta antigen and may be required for the nucleocytoplasmic shuttling of the hepatitis delta virus. Mutations in this gene are associated with the vitamin B12 metabolism disorder termed, homocystinuria-megaloblastic anemia complementation type F (cb1F).
Synonyms:	C6orf209; LMBD1; MAHCF; NESI
Protein Families:	Transmembrane

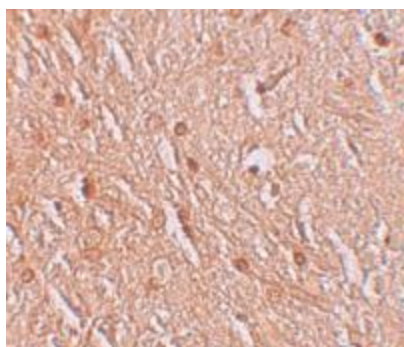


[View online »](#)

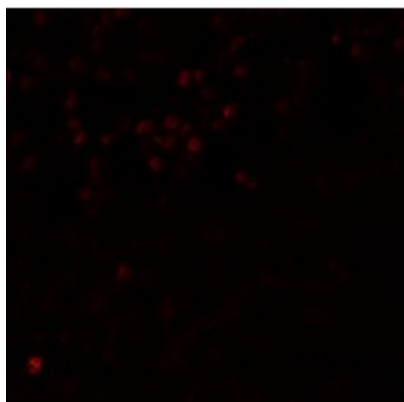
## Product images:



Western blot analysis of LMBRD1 in human brain tissue lysate with LMBRD1 antibody at 1 ug/mL.



Immunohistochemistry of LMBRD1 in human brain tissue with LMBRD1 antibody at 2.5 ug/mL.



Immunofluorescence of LMBRD1 in human brain tissue with LMBRD1 antibody at 20 ug/mL.