

## Product datasheet for TA319962

### CHD7 Rabbit Polyclonal Antibody

#### Product data:

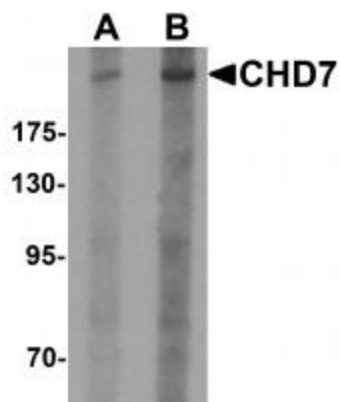
Product Type:	Primary Antibodies
Applications:	IF, IHC, WB
Recommended Dilution:	WB: 1 - 2 ug/mL, ICC: 5 ug/mL, IF: 20 ug/mL
Reactivity:	Human, Mouse
Host:	Rabbit
Isotype:	IgG
Clonality:	Polyclonal
Immunogen:	CHD7 antibody was raised against an 18 amino acid synthetic peptide near the amino terminus of human CHD7.
Formulation:	CHD7 Antibody is supplied in PBS containing 0.02% sodium azide.
Concentration:	1ug/ul
Purification:	CHD7 Antibody is affinity chromatography purified via peptide column.
Conjugation:	Unconjugated
Storage:	Store at -20°C as received.
Stability:	Stable for 12 months from date of receipt.
Gene Name:	chromodomain helicase DNA binding protein 7
Database Link:	<a href="#">NP_060250</a> <a href="#">Entrez Gene 320790 Mouse</a> <a href="#">Entrez Gene 55636 Human</a> <a href="#">Q9P2D1</a>
Background:	CHD7 Antibody: CHD proteins belong to a superfamily of proteins of ATP-dependent chromatin remodeling enzymes that have a unique combination of functional domains, including two N-terminal chromodomains, a SNF2-like ATPase/helicase domain and a DNA-binding domain. These proteins are thought to play a role in early embryonic development by affecting chromatin structure and gene expression. Mutations in one member of this family, CHD7, result in CHARGE syndrome. It colocalizes with embryonic stem (ES) cell master regulators OCT4/POU5F1, SOX2, and NANOG and is thought to modulate ES-specific gene transcription. Together with SOX2, CHD7 has been suggested to also regulate several human disease genes.



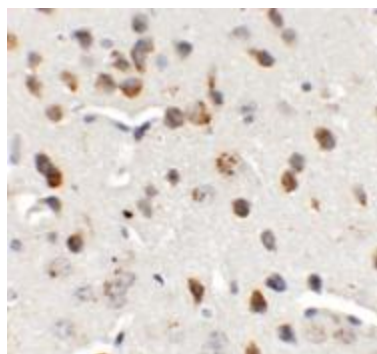
[View online »](#)

Synonyms: CRG; HH5; IS3; KAL5

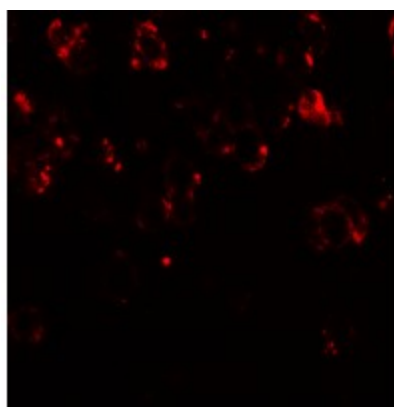
### Product images:



Western blot analysis of CHD7 in SK-N-SH cell lysate with CHD7 antibody at (A) 1 and (B) 2 ug/mL.



Immunohistochemistry of CHD7 in mouse brain tissue with CHD7 antibody at 5 ug/mL.



Immunofluorescence of CHD7 in mouse brain tissue with CHD7 antibody at 20 ug/mL.