

## Product datasheet for **TA319960**

### Protor 1 (PRR5) Rabbit Polyclonal Antibody

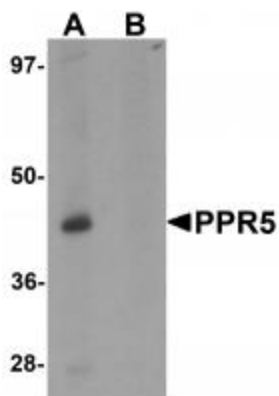
#### Product data:

Product Type:	Primary Antibodies
Applications:	IF, IHC, WB
Recommended Dilution:	WB: 1 ug/mL, ICC: 5 ug/mL, IF: 20 ug/mL
Reactivity:	Human, Mouse, Rat
Host:	Rabbit
Isotype:	IgG
Clonality:	Polyclonal
Immunogen:	PRR5 antibody was raised against a 20 amino acid synthetic peptide near the carboxy terminus of human PRR5.
Formulation:	PRR5 Antibody is supplied in PBS containing 0.02% sodium azide.
Concentration:	1ug/ul
Purification:	PRR5 Antibody is affinity chromatography purified via peptide column.
Conjugation:	Unconjugated
Storage:	Store at -20°C as received.
Stability:	Stable for 12 months from date of receipt.
Gene Name:	proline rich 5
Database Link:	<a href="#">NP_851850</a> <a href="#">Entrez Gene 55615 Human P85299</a>
Background:	PRR5 Antibody: Proline-rich protein 5 (PRR5), also known as Protor-1, is a 388 amino acid protein in Protor family, is thought to act as a tumor suppressor in breast and colorectal tumorigenesis. PRR5 is widely expressed and possesses two RICTOR interaction sites and a C-terminal Proline rich region. It promotes Rapamycin complex 2 (mTORC2) activity. There are four isoforms of PRR5 that are produced as a result of alternative splicing events and these isoforms play an important role in the modulation of platelet-derived growth factor signaling and in the regulation of PDGFR-beta expression.
Synonyms:	FLJ20185k; PP610; PROTOR-1; PROTOR1

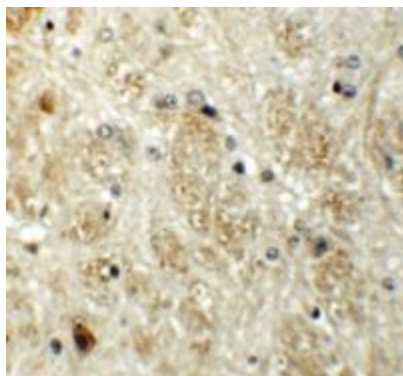


[View online »](#)

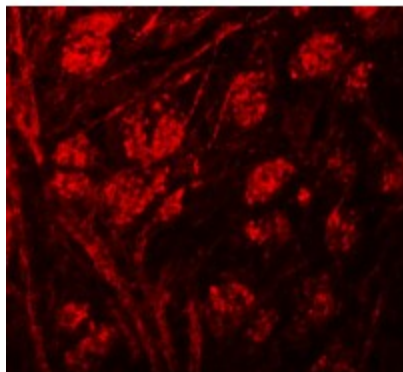
## Product images:



Western blot analysis of PPR5 in SK-N-SH cell lysate with PPR5 antibody at 1 ug/mL in (A) the absence and (B) the presence of blocking peptide



Immunohistochemistry of PPR5 in mouse brain tissue with PPR5 antibody at 5 ug/mL.



Immunofluorescence of PPR5 in mouse brain tissue with PPR5 antibody at 20 ug/mL.