

Product datasheet for **TA319959**

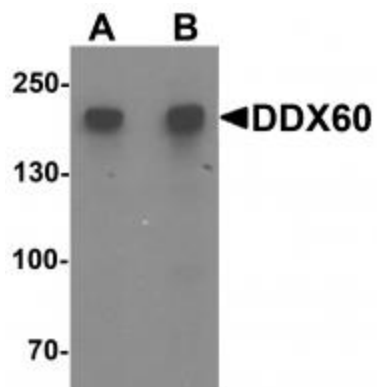
DDX60 Rabbit Polyclonal Antibody

Product data:

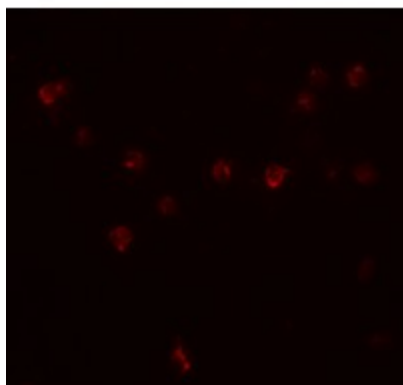
Product Type:	Primary Antibodies
Applications:	IF, WB
Recommended Dilution:	WB: 1 - 2 ug/mL, IF: 20 ug/mL
Reactivity:	Human, Mouse, Rat
Host:	Rabbit
Isotype:	IgG
Clonality:	Polyclonal
Immunogen:	DDX60 antibody was raised against a 17 amino acid synthetic peptide near the center of human DDX60.
Formulation:	DDX60 Antibody is supplied in PBS containing 0.02% sodium azide.
Concentration:	1ug/ul
Purification:	DDX60 Antibody is affinity chromatography purified via peptide column.
Conjugation:	Unconjugated
Storage:	Store at -20°C as received.
Stability:	Stable for 12 months from date of receipt.
Predicted Protein Size:	188 kDa
Gene Name:	DEXD/H-box helicase 60
Database Link:	NP_060101 Entrez Gene 234311 MouseEntrez Gene 100360801 RatEntrez Gene 55601 Human Q8IY21
Background:	DDX60 Antibody: DDX60 is a DEXD/H Box RNA helicase and the human homolog of the <i>S. cerevisiae</i> Ski2, a cofactor of RNA exosome. Expression of DDX60 increases after viral infection and binds to endogenous RIG-I, a cytoplasmic viral RNA sensor, as well as other RIG-I-like receptors such as MDA5 and LGP2. These proteins activate TBK1 and IKK-e, signaling IRF3 and NF-kB-responsive genes in the innate immune response pathway. DDX60 is required for the RIG-I- or MDA5-dependent response to viral infection, but is dispensable for TLR3-mediated signaling.
Synonyms:	FLJ10787; FLJ20035


[View online »](#)

Product images:



Western blot analysis of DDX60 in A20 cell lysate with DDX60 antibody at (A) 1 and (B) 2 ug/mL.



Immunofluorescence of DDX60 in A20 cells with DDX60 antibody at 20 ug/mL.