

Product datasheet for **TA319957**

Rsafd1 (TYW1) Rabbit Polyclonal Antibody

Product data:

Product Type:	Primary Antibodies
Applications:	IHC, WB
Recommended Dilution:	WB: 1 ug/mL, ICC: 5 ug/mL
Reactivity:	Human, Rat
Host:	Rabbit
Isotype:	IgG
Clonality:	Polyclonal
Immunogen:	TYW1 antibody was raised against a 19 amino acid synthetic peptide near the carboxy terminus of human TYW1.
Formulation:	TYW1 Antibody is supplied in PBS containing 0.02% sodium azide.
Concentration:	1ug/ul
Purification:	TYW1 Antibody is affinity chromatography purified via peptide column.
Conjugation:	Unconjugated
Storage:	Store at -20°C as received.
Stability:	Stable for 12 months from date of receipt.
Gene Name:	tRNA-yW synthesizing protein 1 homolog
Database Link:	NP_060734 Entrez Gene 304423 Rat Entrez Gene 55253 Human Q9NV66



[View online »](#)

Background:

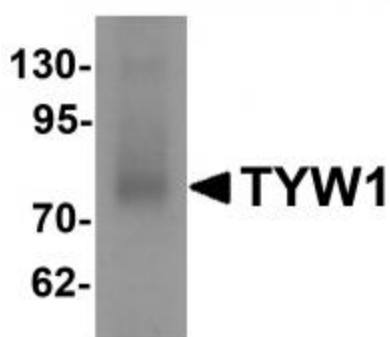
TYW1 Antibody: TYW1, also known as TYW1A, RSAFD1 or YPL207W, is a 732 amino acid protein containing one flavodoxin-like domain that participates in the wybutosine-tRNA (Phe) biosynthesis pathway. Wybutosine (yW) is a hypermodified guanosine at the 3-prime position adjacent to the anticodon of phenylalanine tRNA that stabilizes codon-anticodon interactions during decoding on the ribosome. TYW1 is involved in a multistep enzymatic reaction that stabilizes codon-anticodon base-pairing during the ribosomal decoding process, thereby ensuring correct translation. TYW1 binds to one 4Fe-4S cluster and is located on human chromosome 7. Defects in some of the genes on chromosome 7 have been linked to Osteogenesis imperfecta, Williams-Beuren syndrome, Lissencephaly, Citrullinemia and Shwachman-Diamond syndrome, suggesting that TYW1 may play a role in these conditions

Synonyms:

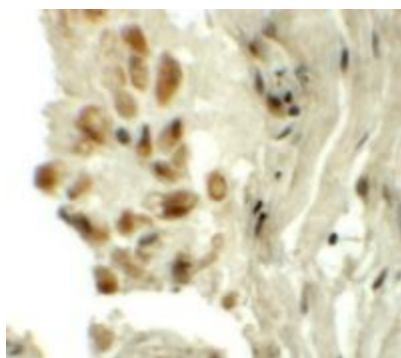
RSAFD1; TYW1A; YPL207W

Protein Families:

Transmembrane

Product images:

Western blot analysis of TYW1 in human lung tissue lysate with TYW1 antibody at 1 ug/mL.



Immunohistochemistry of TYW1 in human lung tissue with TYW1 antibody at 5 ug/mL.