

Product datasheet for **TA319956**

OGFOD1 Rabbit Polyclonal Antibody

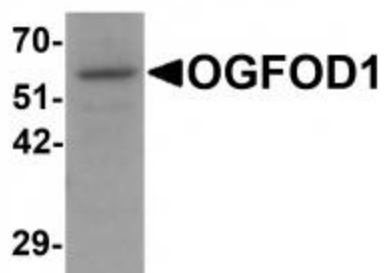
Product data:

Product Type:	Primary Antibodies
Applications:	IF, WB
Recommended Dilution:	WB: 1 ug/mL, IF: 20 ug/mL
Reactivity:	Human, Mouse
Host:	Rabbit
Isotype:	IgG
Clonality:	Polyclonal
Immunogen:	OGFOD1 antibody was raised against a 18 amino acid synthetic peptide near the carboxy terminus of human OGFOD1.
Formulation:	OGFOD1 Antibody is supplied in PBS containing 0.02% sodium azide.
Concentration:	1ug/ul
Purification:	OGFOD1 Antibody is affinity chromatography purified via peptide column.
Conjugation:	Unconjugated
Storage:	Store at -20°C as received.
Stability:	Stable for 12 months from date of receipt.
Gene Name:	2-oxoglutarate and iron dependent oxygenase domain containing 1
Database Link:	NP_060703 Entrez Gene 270086 Mouse Entrez Gene 55239 Human Q8N543
Background:	OGFOD1 Antibody: OGFOD1, a member of the 2-OG-Fe(II) dioxygenase family, plays an important role in ischemic survival and stress. It is an oxidoreductase containing a Prolyl 4-hydroxylase alpha subunit. An OGFOD1 iron binding residue is required for ATPAF1 gene expression. As a novel stress granule component, OGFOD1 plays important proapoptotic roles in the regulation of translation and HRI-mediated phosphorylation of eIF2alpha in cells.
Synonyms:	TPA1

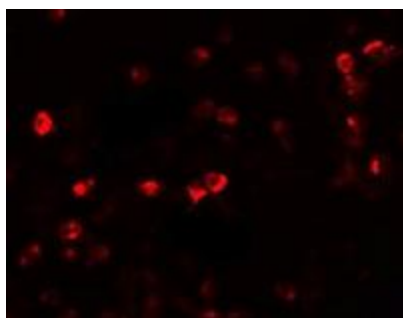


[View online »](#)

Product images:



Western blot analysis of OGFOD1 in Daudi cell lysate with OGFOD1 antibody at 1 ug/mL.



Immunofluorescence of OGFOD1 in Daudi cells with OGFOD1 antibody at 20 ug/mL.